



**St. George's University**  
**SCHOOL OF MEDICINE**  
GRENADA, WEST INDIES



**Northumbria**  
**University**  
NEWCASTLE

FOUR-YEAR MD PROGRAM | FIVE- AND SIX-YEAR MD TRACKS

# **Study to Become a Doctor at** **St. George's University (SGU)**

**Start Your Doctor of Medicine**  
**(MD) Degree in Newcastle, UK**



**St. George's University**  
**SCHOOL OF MEDICINE**





Northumbria  
University  
NEWCASTLE

#TakeOnTomorrow



Northumbria University in Newcastle, UK





*SGU campus in Grenada, West Indies*





## The Partnership

### Start Your Medical Degree in the UK and Broaden Your Global Medical Perspective

Through the St. George's University (SGU) of Grenada School of Medicine/Northumbria University (NU) international partnership, you can pursue a Doctor of Medicine (MD) degree with the opportunity to spend up to three years in Newcastle, UK. The partnership has welcomed more than 2,500 medical students to Newcastle since commencing in 2007.

SGU/NU offers a Four-Year MD Program and Five- and Six-Year MD Tracks. The MD program and tracks allow you to start your education at NU and then complete one year at SGU in Grenada, West Indies. This is followed by two years of clinical rotations in either the US and/or UK. At the end of your studies, you'll be eligible to receive an MD degree from SGU and a Bachelor of Medical Sciences (BMedSci) from NU, equipping you with a truly global medical education.



“ Doing my basic sciences in the UK played a part in helping me get comfortable with the culture of being a medical student, as the smaller class sizes provided a solid foundation for a close-knit working relationship between the faculty and students. ”

**Ifeatu Egwuatu**  
MD '23, Nigeria





## Why Study with SGU in Newcastle, UK

Gain a Global Perspective  
and Two Qualifications

The SGU/NU MD program and tracks have been designed to develop your medical knowledge, clinical skills, and research interests. The program and tracks offered in Newcastle are equivalent to those delivered in Grenada, offering you the opportunity to learn in a different healthcare environment.

### **Bachelor of Medical Sciences Degree from NU**

By joining the SGU/NU program or tracks in Newcastle, you can earn your MD degree from SGU, as well as a BMedSci degree from NU.





## Access to Clinical Rotations in the UK

After successfully earning your BMedSci, you can apply for a UK visa, enabling you to undertake clinical rotations in the UK. This hands-on experience within the National Health Service (NHS) enriches your medical training. When applying for US residency programs, UK foundation programs, or equivalent opportunities worldwide, this experience can strengthen your resume.



[Scan or click to learn more](#)

## Accreditation

SCU's School of Medicine has been continuously accredited for decades, enabling our students to be eligible to practice in the US.



[Scan or click to learn more](#)



# Why Choose SGU for Your Medical Education

## EARN TWO DEGREES

BMedSci degree from NU and  
MD degree from SGU

## STUDY IN THREE COUNTRIES

UK, US, and Grenada

## 22,000+ SCHOOL OF MEDICINE GRADUATES

who have entered the  
global healthcare system.<sup>1</sup>

## 75+ HOSPITALS AND HEALTH SYSTEMS

in two countries offer clinical and  
ambulatory training and support.<sup>2</sup>

## 90% USMLE STEP 1 PASS RATE

for international students taking the  
test for the first time 2018-2022.<sup>3</sup>

## FOR 10 YEARS IN A ROW

SGU secured more US residency positions  
than any medical school in the world.<sup>4</sup>

## 88% US RESIDENCY PLACEMENT RATE

for international graduates over  
the last five years.<sup>5</sup>

1. Based on the number of students who have completed the Doctor of Medicine program from 1981-2023.

2. [sgu.edu/hospitals](https://www.sgu.edu/hospitals)

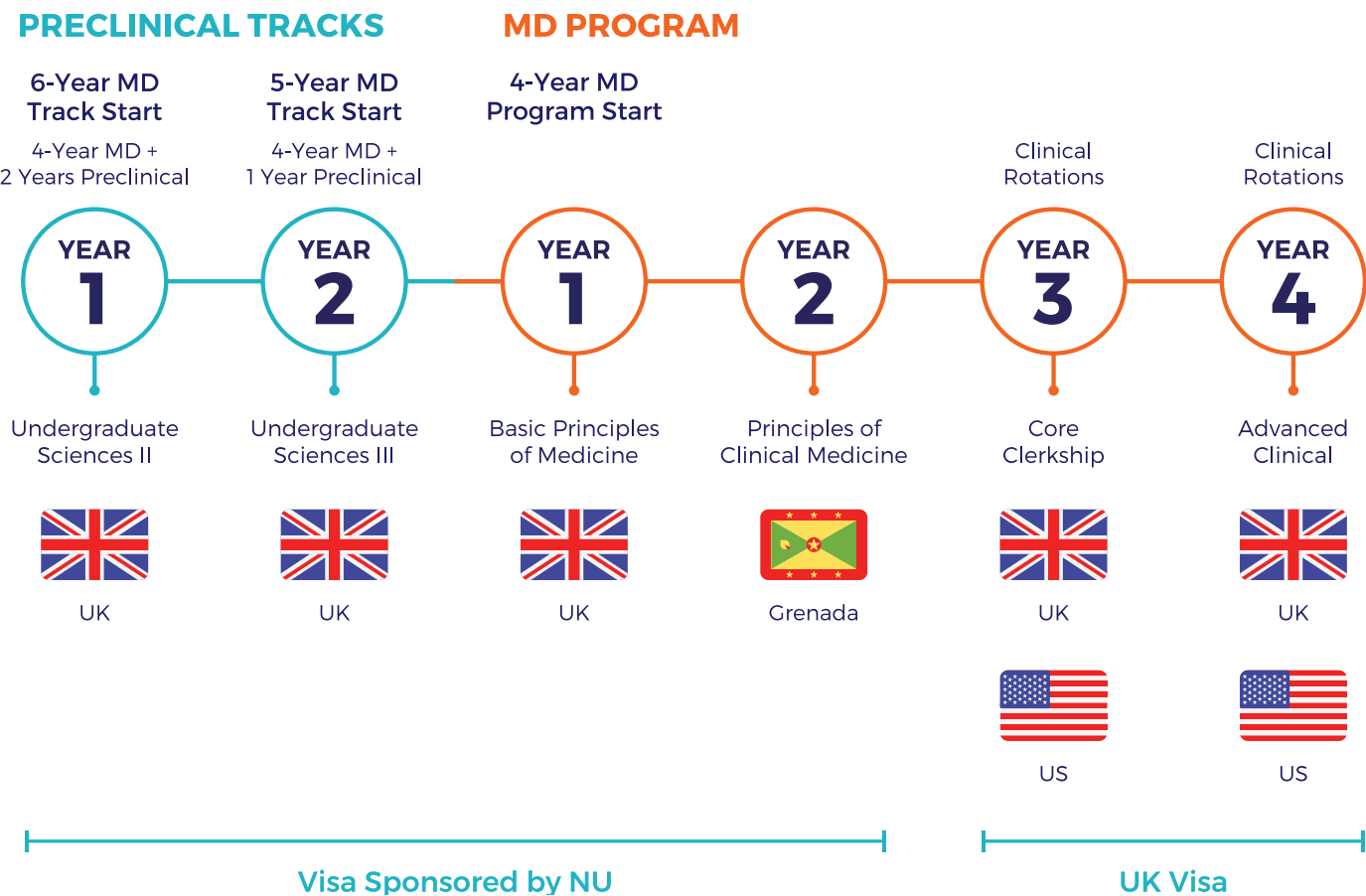
3. Total results from the five calendar years 2018-2022. First-time pass rate is defined as the number of international (non-US citizen/permanent resident or Canadian) students passing USMLE Step 1 on their first attempt divided by the total number of international students taking USMLE Step 1 for the first time within the given time range. In order to be certified to take USMLE Step 1, students are required to pass all basic sciences courses.

4. As the medical school graduating the largest number of students per year, SGU places the largest number of graduates into residency programs each year, based on internal SGU graduate/expected graduate and residency placement data as of March 2024.

5. Average of 2020, 2021, 2022, 2023, and 2024 residency placement rates. Residency placement rate is defined as the total number of international students/graduates (non-US or Canadian) who obtained a US residency divided by the total number of international students/graduates who applied to a US residency program in a given year as of April 2024.



# SGU-NU Pathway to Doctor of Medicine (MD) Degree



All SGU students who study in the UK will apply for a UK student visa. You will be provided with a Confirmation of Acceptance of Study (CAS) showing the NU BMedSci as your program of study. The visa will cover the entire duration of study in the UK plus an additional year. If you wish to return to the UK for clinical rotations, SGU can assist you in applying for a UK visa.



| MD Tracks            | Admission          |
|----------------------|--------------------|
| Four-Year MD Program | August and January |
| Five-Year MD Track   | September          |
| Six-Year MD Track    | September          |

| Entry Point   | Entry Requirements   |
|---|--|
| <p><b>Four-Year MD Program:</b><br/>Medical Year 1</p>                                  | <p><b>Bachelor’s Degree</b> in the requisite sciences.</p>   |
| <p><b>Five-Year MD Track:</b><br/>Preclinical Year 3<br/>(Preclinical Sciences III)</p> | <p><b>Advanced Levels:</b> A minimum of 3 subjects with grades A or B in biology, chemistry, and either math or physics. If neither math nor physics was taken at A Levels, a strong third non-science subject may be accepted, provided there is proof that math or physics was taken at AS Level.</p> <p><b>Approved Foundation Programs:</b> SGU recognizes and approves a range of science/medical pathway programs.</p> <p><b>Full IB Diploma:</b> Requires a minimum score of 32 points; 3 HL science subjects recommended; minimum of 2 HL subjects required, which must include chemistry and biology; results 5 or higher.</p> <p><b>All 10 + 2 India Senior Secondary School Certificate:</b> Minimum average of 80% average in biology, chemistry, math, physics, and English. A pre-sessional math program may be necessary if math has not been taken or successfully completed before matriculation.</p> |
| <p><b>Six-Year MD Track:</b><br/>Preclinical Year 2<br/>(Preclinical Sciences II)</p>   | <p><b>Secondary School Diploma:</b> Strong science performance.</p> <p><b>Further education:</b> AS Levels, Baccalaureate, South Africa Matric, Higher School Exam, Irish Leaving Certificate.</p> <p><b>BTEC:</b> Diploma must be in the appropriate sciences with grades of Distinction.</p> <p><b>American High School Diploma:</b> AP test grades of 4 or 5 in biology and/or chemistry, or averages of 95% +.</p>   |

**Please note, as an international student:**

- Taking the National Eligibility-cum-Entrance Test (NEET) is not required to apply.
- You are exempt from the Medical College Admission Test (MCAT).
- You do not need to apply through UCAS.





## English Language Requirements

An English exam is required for any prospective student whose country is not considered English-speaking as per UK Visas and Immigration (UKVI) guidance.<sup>1</sup> However, an exception may be granted to students with an undergraduate degree from any English-speaking country—a waiver must be requested from SGU in this instance.

- **IELTS:** 7.0 overall and 7.0 on each band required for direct entry
- **TOEFL:** 94-101 overall is required for direct entry (24-26 reading / 24-26 listening / 23 speaking / 27-28 writing)
- **Password Skills:** Scoring is the same as IELTS scoring for direct entry
- **C1 Advanced (CAE):** 185 overall and 185 in each band required for direct entry
- **PTE Academic:** A score of 66.3 overall is required for direct entry (67.6 reading / 66.2 listening / 65.3 speaking / 82.3 writing)
- **Duolingo English Test (DET):** 130 overall and 130 on each band required for direct entry
- **Kaplan Test of English (KTE):** 510 overall and 510 on each band required for direct entry

1. Visit GOV.UK for the list of approved English-speaking countries: [gov.uk/student-visa/knowledge-of-english](https://gov.uk/student-visa/knowledge-of-english)



Annual Tuition Fees (USD) <sup>1</sup>

MD Tracks

Five-Year MD Track (Preclinical Year 3): **\$41,716 <sup>3</sup>**

Six-Year MD Track (Preclinical Year 2): **\$41,716 <sup>3</sup>**



Scan or click to view the most up-to-date rates

Four-Year MD Program

Year 1: **\$74,528 <sup>2</sup>**

Year 2: **\$92,130 <sup>2</sup>**

Year 3: **\$117,423 <sup>2</sup>**

Year 4: **\$79,231 <sup>2</sup>**

Scholarships: Empowering Your Medical Aspirations

Medical school is a significant investment in your future. SGU offers a variety of scholarship opportunities that can help you achieve your dream of becoming a doctor.



Scan or click for more information

1. The figures are based on 2024-2025 academic year rates and are subject to change.

2. This represents the fees before any scholarships or grants are applied where applicable. Deposit and tuition fees will be paid to SGU in USD.

3. No scholarships or grants are available for this year. Deposit and tuition fees will be paid to SGU in USD. The deposit for the program and track is \$5,000.



A modern, multi-story student housing building with a white and grey facade, a prominent red roofline, and a vertical red panel on the right side. The building is set against a blue sky with scattered clouds. The foreground shows some greenery and a paved area.

## Accommodation in Newcastle

### Trinity Square

SGU students can stay in Trinity Square, a modern student housing development, during your time in Newcastle. Trinity Square is NU accommodation and considered on-campus living.



[Scan or click to learn more](#)

# How to Apply



1 Start an application:  
[sgu.edu/apply](https://sgu.edu/apply)



2 Submit all academics, two letters of recommendation,<sup>1</sup> English exam result,<sup>2</sup> extracurricular activities, personal statement, and passport scan



3 Interview



4 Admissions decision<sup>3</sup>



5 Accept offer and submit deposit to secure your spot in the fall or winter intakes



6 Travel to the UK



7 Start studying medicine

1. At least two letters of recommendation are required, one from a teacher or professor.
2. An English exam is required for any prospective students whose country is not considered English-speaking as per UK Visas and Immigration (UKVI) guidance.
3. Scholarship eligibility is reviewed after the admissions decision and is not guaranteed.

**Scan or click to start  
your application**















**Take the first step towards your  
dream career in medicine with SGU**



@stgeorgesu



@StGeorgesU



St. George's University



@StGeorgesU



@StGeorgesU



sgu.edu