



International Student Prospectus 2022

Thailand



STEP UP
& PROGRESS
WITH
STRONG
FOUNDATION
psb
ACADEMY



Contents

Why Singapore?	02
Why PSB Academy?	03
Our Schools	04
Our Disciplines	05
Our Campuses	06
Student Journey	08
Our University Partners	14
Our Industry Partners	21
Progression Charts	22
Course Information	25
Academic Requirements	29
Language Proficiency	35
Academic Certificates	39
Testimonials	40
How to Apply	43

Why Singapore?

See a World of Opportunities

Singapore, an economic powerhouse, actively encourages start-ups, entrepreneurs or anybody who wants to climb the career ladder with innovative ideas to improve the future.

The country is ranked in the international top tiers, from being one of the world's most competitive economies, to the safest country for investment¹, and a smart city with the best transport system² in the world.

It's no surprise that compared with other Asian hubs, Singapore is home to the largest number of headquarter jobs from global Fortune 500 companies, according to studies by AON and KPMG.³

Out and About

Getting around Singapore is easy – and cheap. With a clean, frequent and reliable light railway system, matched by an equally impressive bus service throughout the island, whizzing from home to college, shops and numerous attractions is a breeze. Taxis and private hires won't break the bank either. And the famed Changi Airport offers all the benefits of a global travel hub whenever you need to spread your wings.

An Easy Place to Live

Singapore rates highly on the liveability scale⁴ thanks to its good education, variety of good jobs, thriving economy, quality healthcare and stable way of life. Not least, it enjoys a reputation as one of the world's safest cities.⁵



After Hours

A true education means making the most of every opportunity. So after studying for the day, there are countless new experiences to try. Whether your idea of chilling is a stroll in one of the island's numerous green spaces, getting the adrenaline pumping with your

favourite sport, taking in some art and culture – or indulging in the national pastimes of shopping and eating hearty local hawker centre food for a few dollars (although there's cuisine from all over the world right up to Michelin standard in this foodies' paradise) – Singapore has them all.

1. EDB Singapore. An economic powerhouse. Retrieved from <https://www.edb.gov.sg/en/why-singapore/an-economic-powerhouse.html>
2. McKinsey (2018). Elements of success: Urban transportation systems for 24 cities. Retrieved from https://www.mckinsey.com/~/media/McKinsey/Business%20Functions/Sustainability/Our%20Insights/Elements%20of%20success%20Urban%20transportation%20systems%20of%2024%20global%20cities/Urban-transportation-systems_e-versions.ashx
3. EDB Singapore. Headquarters. Retrieved from <https://www.edb.gov.sg/en/our-industries/headquarters.html>
4. Economist Intelligence Unit (2021). The Global Liveability Index 2021. Retrieved from https://www.eiu.com/n/campaigns/global-liveability-index-2021/?utm_source=google&utm_medium=cpc&utm_name=liveability21&utm_term=liveability_definition&utm_content=general&gclid=CjwKCAjwzOqKBhAwEiwArQGwaN1_mrs_F4RWbwwfScT15_EcZjHgTs2hGzlayK8kQiOCithZnJGMhCXC2UQAvD_BwE
5. EDB Singapore. A great place to live. Retrieved from <https://www.edb.gov.sg/en/why-singapore/a-great-place-to-live.html#:~:text=Singapore%20is%20widely%20regarded%20as,force%20supported%20by%20proactive%20citizens.>



The Vision to See Ahead to a Changing World

Who We Are

PSB Academy, known today as 'The Future Academy' has produced over 200,000 learners throughout our distinguished history. We host over 12,000 students today from more than 50 nationalities with our certificate, diploma, degree, and short courses.

From Humble Beginnings to Award-Winning Institute

Established in 1964, we began under Singapore's Productivity and Standards Board to upgrade the knowledge and skills of Singapore's workforce.

From there we have developed into one of Singapore's leading private educational institutions with an international network of colleges throughout Asia and exciting opportunities to study in universities from Australia, New Zealand, the UK, and US.

Throughout the years we have won a host of accolades and awards. In 2021, the Academy was conferred our third National Business Award in Education by Singapore Business Review and earned "Best Educational Institute - Singapore" by APAC Insider in 2019. One thing

remains the same: the desire to prepare our students for the challenges and opportunities of the future. We'll equip you with the knowledge and skills you need to make your mark in today's rich and invigorating jobs market.

More than Just Books

Acing your exams will be your main goal. But it shouldn't be your only one. In today's complex business world you'll need to know about global cultures and markets. Demonstrate good social skills. Network successfully. These are all aspects of working life that should go hand in hand with your academic results and we will provide the connections to ensure that you're well prepared for work on day one of your new career.

Engaging with Industry

While you're with us, you'll have access to a host of resources, plus workshops and career fairs. You'll also be able to consult with our industry partners, to prepare you for the workforce, so you'll be learning the skills that the market needs. In 2020, almost eight in 10 of our graduates were employed within six months of graduating.⁶

Learning at Leisure

At PSB Academy, you can have fun broadening your experience through our numerous student clubs and activities plus create a positive impact in the community. And, along the way, make some lifelong friends!

6. See page 13

Where Do You See Your Place in the World?

Our multi-award-winning PSB Academy provides courses from foundation level to doctorates, with qualifications awarded both by the Academy and our partner universities and other awarding bodies. Study takes place on our two campuses in Singapore.



The School of Foundation Studies offers programmes that are designed to get young students started on their education journey in PSB Academy. These programmes will provide students with the knowledge as well as interpersonal skills, linguistic skills and general competence upon which to prepare the students for future education.



From accounting and finance, business, logistics and supply chain management for those with a head for figures to human resources, marketing, media communications, tourism and hospitality for those with social or linguistic leanings, we have a range of industry-focused certificates, diplomas and Bachelor's degrees.



STEM jobs are in demand! And they are driving the massive advances that are changing the way we live. Our courses will equip you with the academic and practical skills to make you industry-ready once you've graduated. Courses range from mechanical and electrical engineering, through to information technology, blockchain and cybersecurity and environmental and occupational health and safety.



Could the next life-saving discovery be yours? Our courses include biomedical, pharmaceutical and molecular science plus sport and exercise sciences where studying takes place in our chemistry, life sciences and sport science laboratories.



Our City Campus provides postgraduate education for working professionals. Together with globally leading universities and business schools, we offer a selection of MBAs, Master's and Doctoral Degrees in a conducive learning environment.



Our e-learning certificate and diploma courses help chart the path to a degree from our university partners. You can study anywhere, anytime and at your own pace – but with the assurance of additional tutorial support to guide you through your course.



Our Disciplines

Whatever area of study you select, discover a world of opportunity that broadens your horizons.



Accounting and Finance



Hospitality and Tourism



Media and Communications



Analytics



IT and Computer Science



Sports Sciences



Business Management



Life Sciences



Cyber Security



Logistics and Supply Chain Management



Engineering



Marketing

Our Campuses

Our two campuses span more than 150,000 square feet, featuring lecture theatres, classrooms with writable walls, common study areas that encourage social learning, active student participation and interactions with lecturers. Both campuses are accessed by SmartGantry, a system which enhances campus security and safety for our learning community, with features such as biometric (facial recognition) identification and attendance-taking. These also mean physical touchpoints are reduced for public health safety.



Radio and TV Studios

Students in media and communication programmes get to enjoy working with professional equipment under the supervision of lecturers with industry experience. The purposeful design of the studios and integration into our communication programme curriculum provide practical preparation for our students' future careers.



City Campus

Lecture Theatres

Acoustically balanced with adjustable lighting and AV equipment, our lecture theatres make for conducive learning environments. Spaces range from a more intimate auditorium for 150 students, to a larger conference setting for over 350. In line with our campuses' universal design, our lecture theatres are wheelchair-accessible.

Seminar Rooms

Students in MBA and other postgraduate programmes will be able to take advantage of the curved seating for seminar-style discussions. Writable glass panels can facilitate breakout discussions, while wireless display technology helps break down the traditional boundaries of the physical classroom.

Classrooms

Students benefit from 37 classrooms and a sandbox iteration for experimental teaching methods. Our classrooms and common spaces feature writable walls that encourage spontaneous discussions.

Computer Labs

We are an authorised Autodesk Training Centre (ATC) to provide training services to the public and students to help them enhance their skills with Autodesk® software and integrate professional engineering drawing software into design process.

We also offer educational training in other professional engineering software in collaboration with network security specialists EC-Council. PSB Academy also focuses on training experts for the cyber security field.

Engineering Labs

Some engineering equipment featured includes:

- Electro-magnetic and electrical machine trainers
- Photovoltaics and wind power plant training systems
- 3D printers
- Tensile machine and hardness tester
- Fluid mechanics equipment
- Rotary servo workstations
- Microcontrollers/embedded systems
- Digital storage oscilloscopes and spectrum analysers

Chemistry and Life Sciences Labs

Our chemistry and life science laboratories offer students practical experience at using commonly-used equipment in industry practice. These labs have been designed on the back of more than 10 years of experience in delivering top quality life science education.

Sports Science Lab

Our sport science lab is fitted with 3D Motion Analysis video cameras that are used to capture movement skills. Through these videos, students will then perform biomechanical analysis to provide performance feedback as well as identify potential injuries.



Student Journey



Accommodation

Being a student in another country is not easy. You enter a new environment, meet new people and need to focus on taking in new educational information to secure the grades you desire. This is why at PSB Academy, we strive to provide you with a sense of comfort away from home through the suggested accommodation listed below.

Even before you arrive in Singapore we'll be with you on your journey, right through your studies until the day you enter the workforce.

PSB Academy Student Hostel 201 Pearl's Hill Terrace

- 2-Bedroom Twin Sharing

Each unit comes with a living room, and an attached bathroom and kitchen. There is an induction cooker provided for light cooking. Other furnishings include a 32-inch LCD TV, mattress, a personal wardrobe, study table, microwave oven and a refrigerator. Housekeeping services are provided for students once a week. Each student can also enjoy free WIFI for up to two devices, with the option to upgrade to a faster speed at a cost. Residents of PSB Academy Student Hostel also get to enjoy facilities such as a basketball court and BBQ pits.

For more details on accommodation, scan



PSB Academy Student Apartments 33 Liang Seah Street

- Single Deluxe
- Single Premier
- Double Deluxe
- Double Premier
- Triple Premier

Each unit is fully air-conditioned with an attached bathroom. Other furnishings include a mattress, a personal wardrobe, a study table and a refrigerator. Free WIFI is also provided to each student. There is also a shared coin-operated washer and dryer along with a weekly housekeeping service. The apartments provide students with 24-hour assistance and emergency support.

PSB Academy gives no warranty and accepts no responsibility or liability for the accuracy, or the completeness of the information provided for non-PSB Academy accommodation options. In providing such information, PSB Academy does not in any way, expressly or implicitly, approve or endorse the products or services referred herein. The information provided is compiled or given in good faith and is intended as a guide only.



Other accommodation options:

- Evo House Services
- 31 Homestay
- Dwell Student Living
- Coliwoo Youth @
1A Lutheran Road



Freshman Welcome

Welcome to the family! New students can join orientation programmes to enjoy fun activities, make new friends and get familiar with our campuses. Our list of programmes includes Break the Ice for Certificate in English Proficiency students, Connect+ for new diploma students and GNET for new degree students.

Arrival in Singapore

Upon arrival in Singapore, please present these documents at immigration and on campus for your orientation*:

- ICA Disembarkation/Embarkation Card (D/E Card)
- PSB Academy Admission Letter
- Student's Pass Approval Letter (original copy)

A portion of the D/E Card will be returned to you. Please keep this for the application of your Student's Pass.

** Subject to prevailing travel and health control measures*

Meet-and-Greet

We gladly provide a meet-and-greet service for all new international students through our vendor, who takes care of the following:

- Meet-and-greet at Changi Airport
- Transportation to your accommodation
- Arrangement for your medical check-up
- Coordination for your collection of Student's Pass at Immigration and Checkpoints Authority

Please request this service from your country manager during your pre-admission counselling so that our meet-and-greet vendor will be notified prior to your arrival in Singapore. New international students will need to log in for airport pickup three days before arrival.



Campus Life

As a student at PSB Academy, your life is never dull. In your time with us, you will be able to discover your passion and connect with peers through our student clubs and international communities. What's more, you get to hone your leadership skills as a student leader and gain real-world experience through workshops and company visits organised by the Student Affairs team.

Break The Ice (BTI)

Organised for new Certificate in English Proficiency students to get to know one another, Break The Ice helps you to effortlessly integrate.

Connect+

Connect+ helps nurture positive mindsets among our diploma students. This fun-filled platform lets you build lasting memories with your peers through games, art, and cultural exchanges.

Global Awareness and Networking (GNet)

GNet focuses on allowing undergraduates to develop an appreciation for the intricate skill of networking, which will be an asset to keep in your back pocket when you eventually take on the challenges of tomorrow.

Campus Club Fair

Thrice a year, student leaders from our various student clubs recruit new members and promote upcoming events.



Career Services

Here at PSB Academy, we strongly encourage our students to go through the journey of career preparation from the first day they step into school. To help you with this, we have divided the journey into three checkpoints for you to follow up and track your progress throughout.

#SetOut

By taking arguably the hardest, yet most important first step out, you will be able to learn much more about yourself beyond the regular curriculum. By joining events such as our industry visits, you will be able to experience first-hand how a company functions, network with our industry partners and explore potential career opportunities.

#StepUp

Having experienced what to expect in the corporate world, you are encouraged to explore beyond your comfort zone by participating in our career workshops, industry-specific career talks, career conferences and even engaging with an industry mentor for their expert guidance. This will help set you up for your job search way before your graduation.

#SuitUp

Your final checkpoint will be the day when you are ready to suit up and enter the corporate world! At PSB Academy's annual career fair, graduating students will be given a chance to interact with employers from all over Singapore, be at their best and land themselves a job opportunity.

Explore our Student Clubs:





Alumni

Overseas Alumni Reunions

Reconnect with fellow alumni through physical and/or online events and activities.



Appreciation Series

Savour an evening of delectable cuisines or interesting activities alongside your peers from diverse cultures.



Movie in the House

Sit back and be entertained at our blockbuster movie screenings.

Fabulous Friday

Chill out and catch up over food and drinks at our social networking events.

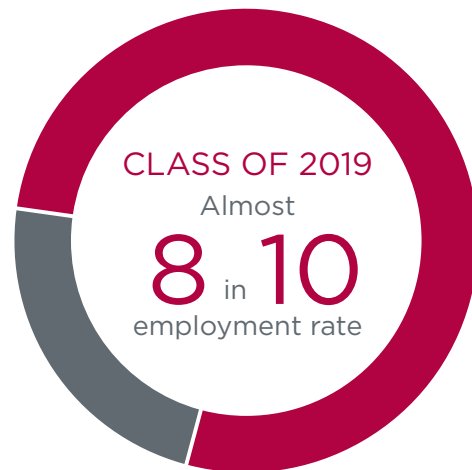
Catch up over food and drinks at our social networking events

Note: All student and alumni activities are subject to prevailing travel and health control measures

PSB Academy Graduate Employment Survey 2020

Your career prospects matter deeply to you — and just as deeply to us. We are passionate about enriching our students with the skills and knowledge to make you highly attractive to employers.

PSB Academy Graduate Employment Survey 2020 was conducted by Tiptop Consultants. The employment rate refers to the number of graduates employed as a proportion of graduates in the labour force, and includes all graduates from full/part-time degree courses in 2019 six months after examinations.



Ministry of Manpower Labour Force in Singapore 2020



Income of Full-time Employed Resident Degree Holders of All Ages

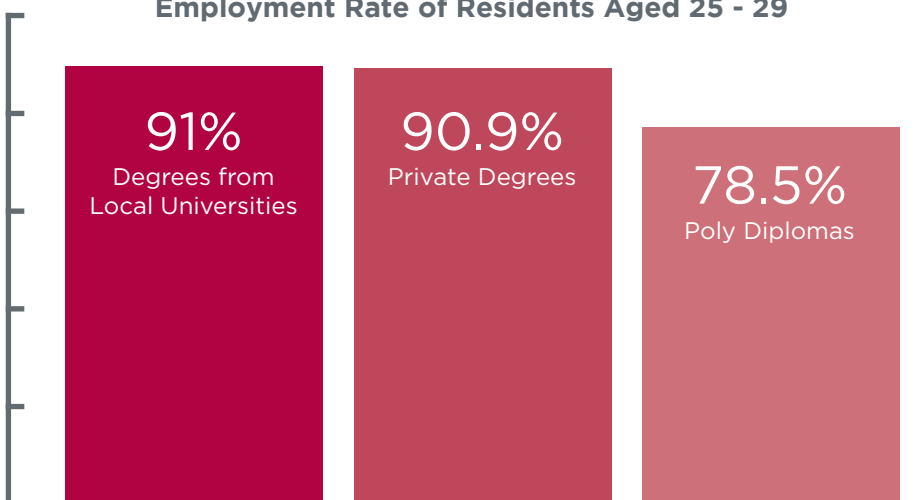
 **1.3% p.a.**
Real Income Growth 2015-2020

Median Gross Monthly Income of Full-time Employed Residents Aged 25-29

 **\$4,118**
Private Degrees

 **\$3,296**
Poly Diplomas

Employment Rate of Residents Aged 25 - 29



The Report on Labour Force in Singapore is a key annual report on Singapore's labour market. It analyses various labour market indicators on employment, unemployment, incomes and working hours, to present a comprehensive picture of the Singapore labour market each year. This year's report focuses on the impact of Covid-19 on different segments of the resident labour force in Singapore.

Our University Partners



Coventry University

We are a forward-looking, modern university with a proud tradition as a provider of high-quality education and a focus on applied research. Our teaching, staff, facilities and student experience have received a variety of awards and accolades in recent years, and our future is looking bright too.

As a global university that ranks strongly in national and worldwide league tables – as well as for positive feedback from our students – we’re aiming to set ourselves apart as the university

of choice for a great experience while studying. We are committed to continuing that journey of delivering quality teaching and learning, outstanding student satisfaction, and our objective of making our students into global-ready graduates.

Learn more about us:



Accolades

Guardian University Guide 2022:

- **Top 38 University in the UK**
- **Top 2 UK University for Hospitality, Event Management & Tourism**

Teaching Excellence Framework Awards 2017:

- **Awarded Gold for the Highest Quality of Teaching and Learning in the UK**

Times Higher Education Young University Rankings 2021:

- **Top 250 Young University in the World**

QS Stars University Ratings 2021:

- **Rated 5 Stars**

Times Higher Education World University Rankings 2022:

- **Top 100 Universities in the World for ‘International Outlook’**



Edinburgh Napier University

Edinburgh Napier University delivers the skills and experience that matter. We combine professional know-how with an academic approach and work-related learning to help our students succeed beyond university. Meanwhile, our research shapes the world around us, improving lives in Scotland and across the globe.

Our degrees are taught across the globe in collaboration with our partners, including at PSB Academy in Singapore. We have nearly 20,000 students studying with Edinburgh Napier across our three campuses in Edinburgh and through transnational education overseas. We are an international community with students from more than 150 countries.

Learn more about us:



Accolades

Research Excellence Framework 2014:

- **92% Research Internationally Recognised**

QS Stars University Ratings 2021:

- **Rated 5 Stars for Teaching, Employability and Internationalisation**

The Times and Sunday Times Good University Guide 2021:

- **Top Scottish Modern University**

Guardian University Guide 2021:

- **Top 6 UK University for Hospitality, Event Management & Tourism**
- **Top 49 UK University for Sports Science**





Edith Cowan University

Edith Cowan University (ECU) provides the ideal learning environment for people who want to reach their potential. Established in 1991, ECU took the opportunity to reshape the way higher education is delivered in a distinctive and inspiring campus environment.

ECU courses are developed in consultation with industry, and teaching staff have extensive industry experience and networks. ECU has more than 30,000 undergraduate and postgraduate students. This approach has been

rewarded with five-star ratings for undergraduate teaching quality over the past 15 years, along with consistently high ratings for overall education experience and skills development, as reported in the Good Universities Guide.

CRICOS Provider Code: 00279B

Learn more about us:



Accolades

Times Higher Education Young University Ranking 2021:

- **Top 14 Young Australian University**
- **Top 93 Young University in the World**

Times Higher Education University Impact Rankings 2021:

- **Top 200 University in the World for Sustainable Impact**

Good Universities Guide 2021:

- **Rated 5 Stars for All Undergraduate Educational Experience Ratings**

Times Higher Education World University Rankings 2022:

- **Top 27 University in Australia**



La Trobe University

For more than 50 years, La Trobe University has provided a pathway to success to people from all walks of life, and continues to transform the lives of individuals and communities. Our students gain the technical skills they need for the jobs of the future, but also the human strengths of resilience, passion, curiosity and empathy that are essential in a modern workplace.

We have worked hard to develop a global reputation, while expanding our reach to seven campuses across Victoria and New South Wales. Our world-

class, high-impact research addresses the major issues of our time. By leveraging our strengths and ethos of excellence and social inclusion, we're redefining what it means to be a great university for the 21st century.

CRICOS Provider Code: 00115M

Learn more about us:



Accolades

Academic Ranking of World Universities 2021:

- **Top 18 University in Australia**

QS Graduate Employability Rankings 2020:

- **Top 18 University in Australia for Graduate Employability**

QS Stars University Ratings 2021:

- **Rated 5+ Stars (Highest Rating Possible)**

Times Higher Education World University Rankings 2022:

- **Top 250 University in the World**
- **Top 13 University in Australia**

QS World University Rankings by Subject 2020:

- **Top 14 University in Australia for Life Sciences and Medicine**



Massey University

Massey University is an innovative, self-reliant, outward-facing institution committed to defining our future. Our students can expect a teaching and learning environment that will enable them to be creative, connected and innovative contributors to society. We are a research-led university that is committed to the application of knowledge.

Massey has a well-established reputation for our academic leadership, research excellence and innovative teaching

grounded in real-world issues. We also create meaningful, mutually beneficial relationships with industry. This ensures our teaching, learning and research is innovative and relevant for our 36,000 students across multiple campuses and distance learning.

Learn more about us:



Accolades

QS Stars University Ratings 2021:

- **Rated 5+ Stars (Highest Rating Possible)**

QS World University Rankings 2022:

- **Top 284 University in the World**
- **Top 21 University in Oceania**
- **Top 5 University in New Zealand**

Times Higher Education University Impact Rankings 2020:

- **Top 60 University in the World for Sustainable Impact**

Double AACSB-Accredited for Business and Accounting programmes



The University of Newcastle, Australia



The Newcastle Australia Institute of Higher Education (Newcastle Australia IHE) is the Asia Pacific hub of The University of Newcastle, Australia. We deliver highest-quality programmes and undertake collaborative research in partnerships with education institutions in Singapore and across the regions. Over the years, we have graduated more than 6,000 graduates from 39 countries, and our alumni are making meaningful and lasting contributions to businesses and the wider community in Singapore and worldwide.

Strategically located in Singapore, we aim to be the nexus of nations, opening our degrees to students from all walks of life. Our locally based team of leading academics and teaching and learning staff give you first-hand access to support from your lecturers, tutors and a teaching and learning adviser.

CRICOS Provider Code: 00109J

Learn more about us:



Accolades

QS World University Rankings 2022:

- **Top 12 University in Australia**
- **Top 197 University in the World**

More than 6,000 Newcastle Australia IHE graduates from 39 countries

AACSB-Accredited Business School

QS World Rankings by Subject 2021:

- **Top 23 University in Oceania for Accounting and Finance**
- **Top 18 University in Oceania for Business and Management Studies**
- **Top 15 University in Oceania for Engineering and Technology**





Webster University

Webster University has more than a 100-year history with international education, starting with hosting international students from Europe within a few years of our opening and later establishing one of the first international faculty exchange programmes in the United States. With our first campus outside the United States opening in 1978, today Webster has locations in Austria, China, Ghana, Greece, Kazakhstan, the Netherlands, Switzerland, Thailand, and Uzbekistan, as well as exchange agreements with more than two dozen other institutions around the world.

Singapore will offer students and faculty numerous opportunities to learn in one of the most multicultural nations

and dynamic economies in the world, with new avenues for collaboration and exchange among Webster students, faculty, and partners around the world. Webster University students at PSB Academy will be able to reap the benefits of both Western and Asian perspectives in their education, including student exchange opportunities at the University's other locations, and become well-rounded professionals in the global workforce.

Learn more about us:



Accolades

U.S. News & World Report Best Colleges Rankings 2021:

- **Top 15 US Regional University Midwest**

More than 200,000 university alumni worldwide



Our Industry Partners

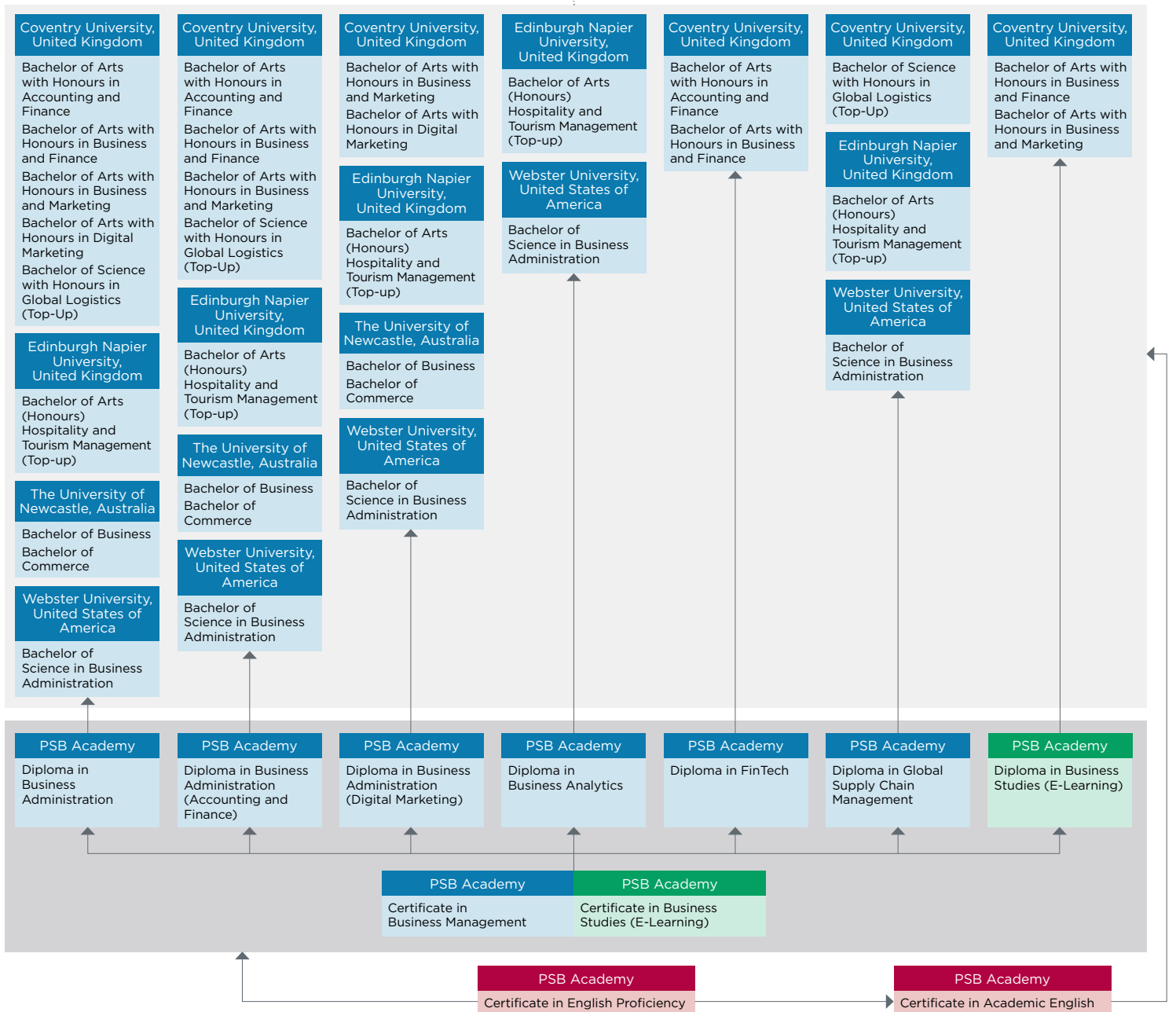
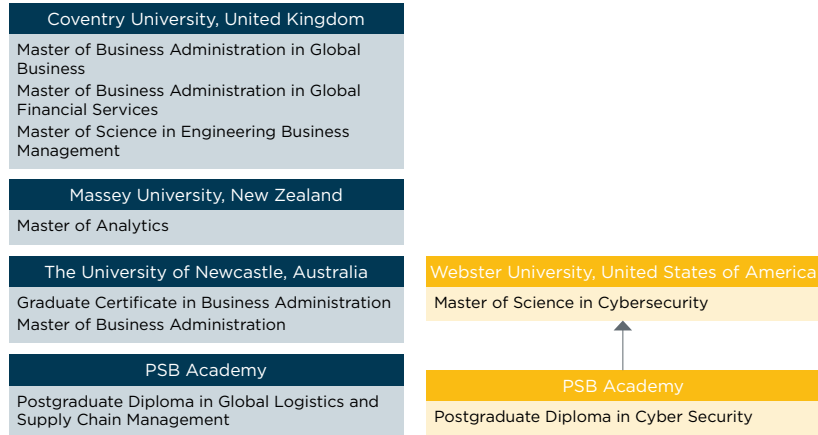
At PSB Academy, we are constantly seeking to collaborate with leading industry players around the world to enhance your learning experience. These partnerships entail a combination of certifications, student memberships, curriculum development or even academic delivery for selected courses.



Progression Pathways



Business Courses





Hospitality and Media Courses

Coventry University, United Kingdom
 Master of Business Administration in Global Business
 Master of Business Administration in Global Financial Services
 Master of Science in Engineering Business Management

Edinburgh Napier University, United Kingdom
 Master of Science International Business Management

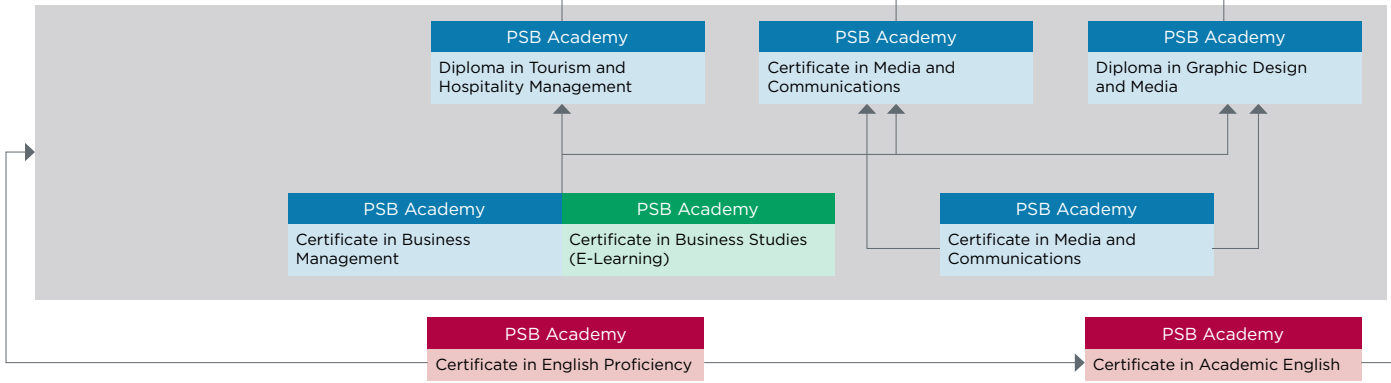
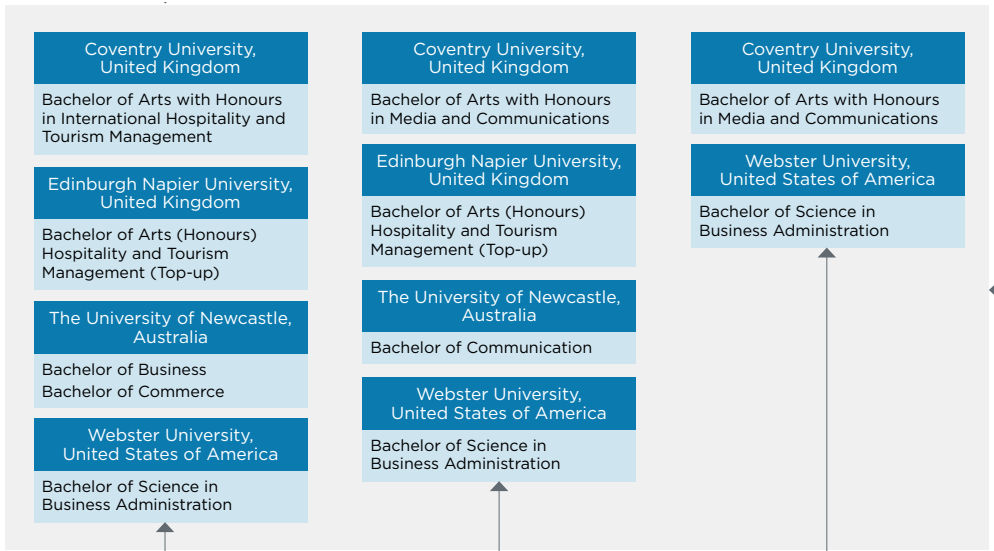
Massey University, New Zealand
 Master of Analytics

The University of Newcastle, Australia
 Graduate Certificate in Business Administration
 Master of Business Administration

PSB Academy
 Postgraduate Diploma in Global Logistics and Supply Chain Management

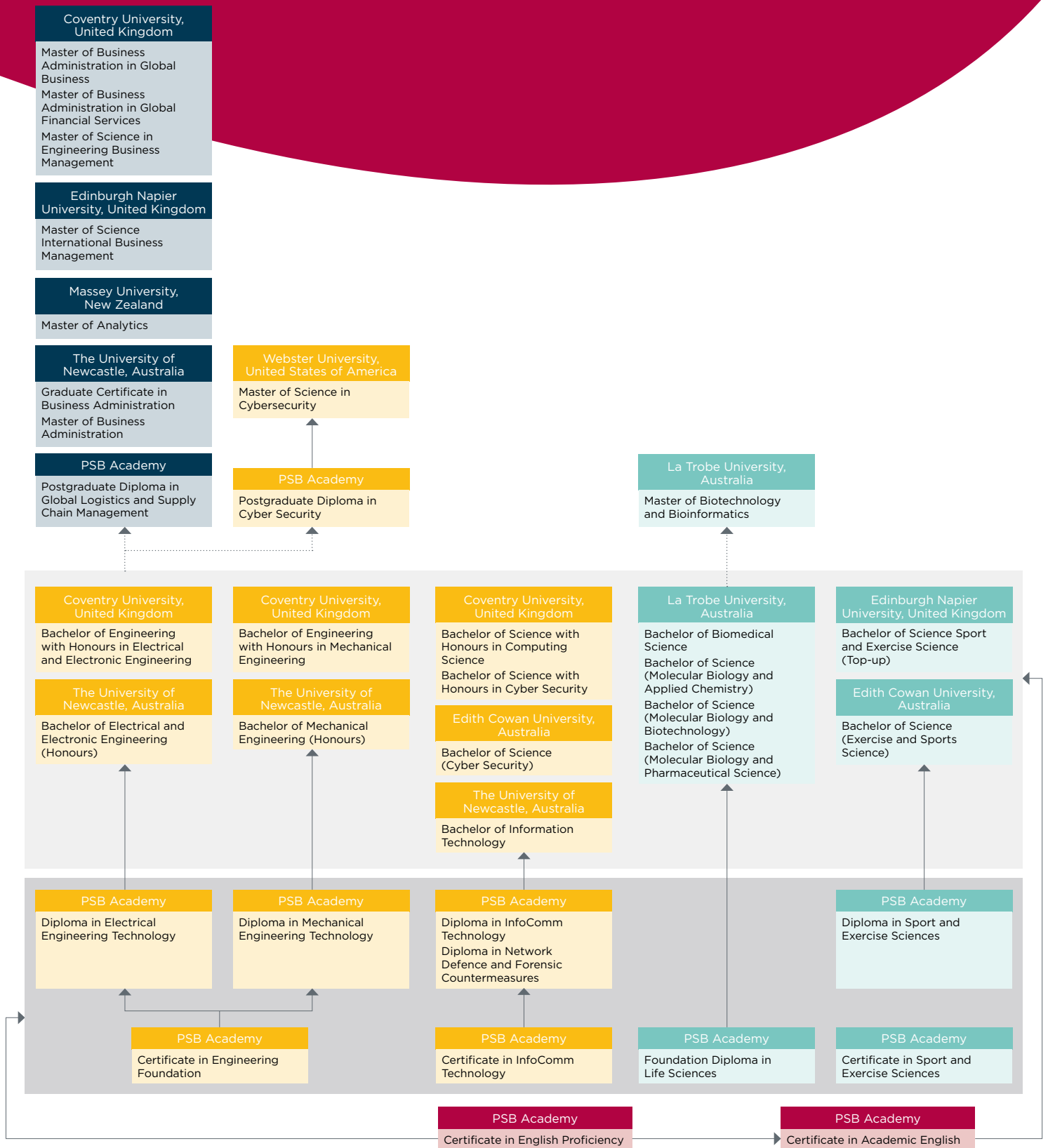
Webster University, United States of America
 Master of Science in Cybersecurity

PSB Academy
 Postgraduate Diploma in Cyber Security





Engineering, InfoComm Technology and Science Courses



2022 Courses

Which course will open up a new world for you?
Dive into the details of your academic future.

Course	Intakes	Duration (Months)	Total Course Fee	Total Fees*
PSB Academy, Singapore				
Certificate in Academic English	January, April, July, October	4	S\$4,387.00	S\$5,937.00
Certificate in Business Management	January, February, April, July, August, October	6	S\$4,365.60	S\$5,915.60
Certificate in Business Studies (E-Learning)	Every Month	6	S\$1,712.00	S\$1,842.00
Certificate in Business Studies (E-Learning) [Without Tutorial]			S\$1,284.00	S\$1,414.00
Certificate in Engineering Foundation	January, April, July, October	6	S\$4,419.10	S\$5,969.10
Certificate in English Proficiency	January, March, May, July, September, November	12	S\$13,642.50	S\$15,192.50
Certificate in InfoComm Technology	January, April, July, October	6	S\$4,419.10	S\$5,969.10
Certificate in Media and Communications	January, February, April, July, August, October	6	S\$4,365.60	S\$5,915.60
Certificate in Sport and Exercise Sciences	January, April, July, October	6	S\$4,429.80	S\$5,979.80
Diploma in Business Administration	January, February, April, July, August, October	12	S\$11,812.80	S\$13,362.80
Diploma in Business Administration (Accounting and Finance)			S\$11,812.80	S\$13,362.80
Diploma in Business Administration (Digital Marketing)			S\$11,812.80	S\$13,362.80
Diploma in Business Analytics	January, April, July, October	12	S\$11,812.80	S\$13,362.80
Diploma in Business Studies (E-Learning)	Every Month	9	S\$4,280.00	S\$4,410.00
Diploma in Business Studies (E-Learning) [Without Tutorial]			S\$3,424.00	S\$3,554.00
Diploma in Electrical Engineering Technology	January, April, July, October	12	S\$13,203.80	S\$14,753.80
Diploma in FinTech			S\$11,812.80	S\$13,362.80
Diploma in Global Supply Chain Management			S\$11,812.80	S\$13,448.40
Diploma in Graphic Design and Media			S\$11,812.80	S\$13,362.80
Diploma in InfoComm Technology			S\$11,170.80	S\$12,720.80
Diploma in Mechanical Engineering Technology			S\$13,203.80	S\$14,753.80
Diploma in Media and Communications			S\$11,812.80	S\$13,362.80
Diploma in Network Defence and Forensic Countermeasures			S\$11,705.80	S\$13,255.80
Diploma in Sport and Exercise Sciences			S\$11,170.80	S\$12,720.80
Diploma in Tourism and Hospitality Management			S\$11,812.80	S\$13,362.80

Course	Intakes	Duration (Months)	Total Course Fee	Total Fees*
Foundation Certificate in Business	January, May, July, November	6	S\$4,173.00	S\$5,723.00
Foundation Certificate in Engineering and Technology		9	S\$4,173.00	S\$5,723.00
Foundation Diploma in Life Sciences	January, March, June, September	12	S\$10,807.00	S\$12,357.00
Postgraduate Diploma in Cyber Security	TBC	12	S\$11,459.70	S\$13,009.70
Postgraduate Diploma in Global Logistics and Supply Chain Management			S\$11,898.40	S\$13,448.40

Coventry University, United Kingdom

Bachelor of Arts with Honours in Accounting and Finance [Year 2 Entry]	March, July, November	28	S\$21,828.00	S\$23,378.00
Bachelor of Arts with Honours in Business and Finance [Year 2 Entry]			S\$21,828.00	S\$23,378.00
Bachelor of Arts with Honours in Business and Marketing [Year 2 Entry]			S\$21,828.00	S\$23,378.00
Bachelor of Arts with Honours in Digital Marketing [Year 2 Entry]		24	S\$21,828.00	S\$23,378.00
Bachelor of Arts with Honours in International Hospitality and Tourism Management [Year 2 Entry]			S\$21,828.00	S\$23,378.00
Bachelor of Arts with Honours in Media and Communications [Year 2 Entry]		28	S\$21,828.00	S\$23,378.00
Bachelor of Engineering with Honours in Electrical and Electronic Engineering [Year 2 Entry]		32	S\$25,027.30	S\$26,577.30
Bachelor of Engineering with Honours in Mechanical Engineering [Year 2 Entry]			S\$25,027.30	S\$26,577.30
Bachelor of Science with Honours in Computing Science [Year 2 Entry]		24	S\$24,652.80	S\$26,202.80
Bachelor of Science with Honours in Cyber Security [Year 2 Entry]			S\$24,652.80	S\$26,202.80
Bachelor of Science with Honours in Global Logistics (Top-up)		20	S\$21,828.00	S\$23,378.00
Master of Business Administration in Global Business		16	S\$27,413.40	S\$29,183.40
Master of Business Administration in Global Financial Services		12	S\$27,413.40	S\$29,183.40
Master of Science in Engineering Business Management			S\$22,020.60	S\$23,790.60

Edinburgh Napier University, United Kingdom

Bachelor of Arts (Honours) Hospitality and Tourism Management (Top-up)	March, July, October	28	TBC	TBC
Bachelor of Arts Hospitality and Tourism Management (Top-up)	TBC	20	S\$18,802.58	S\$20,352.58
Bachelor of Science Sport and Exercise Science (Top-up)	February, May, September	16	S\$26,578.80	S\$28,128.80
Master of Science International Business Management	February, June, October		S\$21,474.90	S\$23,244.90

Course	Intakes	Duration (Months)	Total Course Fee	Total Fees*
Edith Cowan University, Australia				
Bachelor of Science (Cyber Security) [Year 2 Entry]	January, May, September	24	S\$26,022.40	S\$27,572.40
Bachelor of Science (Exercise and Sports Science)			S\$26,022.40	S\$27,572.40
La Trobe University, Australia				
Bachelor of Biomedical Science	January, May, September	28	S\$48,021.60	S\$49,571.60
Bachelor of Biomedical Science [18 Modules]			S\$36,016.20	S\$37,566.20
Bachelor of Biomedical Science [12 Modules]			S\$24,010.80	S\$25,560.80
Bachelor of Science (Molecular Biology and Applied Chemistry)			S\$48,021.60	S\$49,571.60
Bachelor of Science (Molecular Biology and Applied Chemistry) [18 Modules]			S\$36,016.20	S\$37,566.20
Bachelor of Science (Molecular Biology and Applied Chemistry) [12 Modules]			S\$24,010.80	S\$25,560.80
Bachelor of Science (Molecular Biology and Biotechnology)			S\$48,021.60	S\$49,571.60
Bachelor of Science (Molecular Biology and Biotechnology) [18 Modules]			S\$36,016.20	S\$37,566.20
Bachelor of Science (Molecular Biology and Biotechnology) [12 Modules]			S\$24,010.80	S\$25,560.80
Bachelor of Science (Molecular Biology and Pharmaceutical Science)			S\$48,021.60	S\$49,571.60
Bachelor of Science (Molecular Biology and Pharmaceutical Science) [18 Modules]			S\$36,016.20	S\$37,566.20
Bachelor of Science (Molecular Biology and Pharmaceutical Science) [12 Modules]	S\$24,010.80	S\$25,560.80		
Master of Biotechnology and Bioinformatics [Advanced Bioinformatics Pathway]	September	24	S\$44,512.00	S\$46,062.00
Master of Biotechnology and Bioinformatics [Research Pathway]			S\$22,256.00	S\$23,806.00
Massey University, New Zealand				
Master of Analytics	TBC	12	S\$27,285.00	S\$29,055.00



Course	Intakes	Duration (Months)	Total Course Fee	Total Fees*
The University of Newcastle, Australia				
Bachelor of Business	January, May, September	28	S\$43,656.00	S\$45,206.00
Bachelor of Business [Year 2 Entry]			S\$29,104.00	S\$30,654.00
Bachelor of Commerce		28	S\$43,656.00	S\$45,206.00
Bachelor of Commerce [Year 2 Entry]			S\$29,104.00	S\$30,654.00
Bachelor of Communication		28	S\$43,656.00	S\$45,206.00
Bachelor of Communication [Year 2 Entry]			S\$29,104.00	S\$30,654.00
Bachelor of Electrical and Electronic Engineering (Honours)		32	S\$69,764.00	S\$71,314.00
Bachelor of Information Technology		28	S\$43,656.00	S\$45,206.00
Bachelor of Information Technology [Year 2 Entry]			S\$29,104.00	S\$30,654.00
Bachelor of Mechanical Engineering (Honours)		32	S\$69,764.00	S\$71,314.00
Graduate Certificate in Business Administration		8	S\$9,972.40	S\$11,522.40
Master of Business Administration		16	S\$29,917.20	S\$31,687.20
Webster University, United States of America				
Bachelor of Science in Business Administration	January, June, August	48	S\$71,518.80	S\$73,068.80
Bachelor of Science in Business Administration [Entry with 93 Credits]			S\$55,427.07	S\$56,977.07
Master of Science in Cybersecurity	January, March, May, August, October	15	S\$27,019.60	S\$28,569.60

Miscellaneous fees:



*The total fees include all mandatory charges for new international students e.g. course fee, application fee, student development and administrative fee, and 7% GST.

Academic Requirements

PSB Academy, Singapore	
Certificate in Business Management Certificate in Business Studies (E-Learning) Certificate in Engineering Foundation Certificate in InfoComm Technology Certificate in Media and Communications Certificate in Sport and Exercise Sciences	<ul style="list-style-type: none"> High School Certificate (Mathayom 5) 60% average for overall score High School Certificate (Mathayom 4) 70% average for overall score
Diploma in Business Administration Diploma in Business Administration (Accounting and Finance) Diploma in Business Administration (Digital Marketing) Diploma in Business Analytics Diploma in Business Studies (E-Learning) Diploma in Electrical Engineering Technology Diploma in FinTech Diploma in Global Supply Chain Management Diploma in Graphic Design and Media Diploma in InfoComm Technology Diploma in Mechanical Engineering Technology Diploma in Media and Communications Diploma in Network Defence and Forensic Countermeasures Diploma in Sport and Exercise Sciences Diploma in Tourism and Hospitality Management	<ul style="list-style-type: none"> High School Certificate (Mathayom 6) 60% average for overall score <p>Note: Relevant Diploma qualifications may be considered for module exemptions for the diploma pathway</p>
Foundation Diploma in Life Sciences – 8 modules (Registered pathway)	<ul style="list-style-type: none"> High School Certificate (Mathayom 5) 60% average for overall score High School Certificate (Mathayom 4) 70% average for overall score
Foundation Diploma in Life Sciences – 6 modules (Advanced standing – Case by Case basis)	<ul style="list-style-type: none"> High School Certificate (Mathayom 5) 70% average for overall score High School Certificate (Mathayom 4) 80% average for overall score <ul style="list-style-type: none"> One of the above with Mathematics/Statistics and Chemistry Component Passed
Postgraduate Diploma in Global Logistics and Supply Chain Management	<ul style="list-style-type: none"> Min Bachelor Degree of any discipline or Diploma with 3 years of working experience <ul style="list-style-type: none"> Students with Diploma entry are not guaranteed entry to Masters (subject to University approval)

The University of Newcastle, Australia

Master of Business Administration	Refer to MER from the University
<p>Bachelor of Business Bachelor of Commerce Bachelor of Communication Bachelor of Mechanical Engineering (Honours)</p>	<p>Refer to MER from the University https://www.newcastle.edu.au/international/study-with-us/undergraduate/undergraduate-entry-requirements For Credit Transfer arrangements: https://www.newcastle.edu.au/international/study-with-us/undergraduate/singapore/future-students/degrees/credit-transfer-arrangements</p> <ul style="list-style-type: none"> • Advanced standing is awarded for the successful completion of: <ul style="list-style-type: none"> • PSB Academy Diploma in Business Administration • PSB Academy Diploma in Business Administration (Accounting and Finance) • PSB Academy Diploma in Business Administration (Supply Chain Management) • Diploma in Media and Communications (valid until 31 Dec 2024) • Diploma in Electrical Engineering Technology (valid until Dec 2024) • Diploma in Mechanical Engineering Technology (valid until Dec 2024) • Diploma in InfoComm Technology • Or equivalent
Bachelor of Information Technology	<p>Refer to MER from the University https://www.newcastle.edu.au/international/study-with-us/undergraduate/undergraduate-entry-requirements For Credit Transfer arrangements: https://www.newcastle.edu.au/international/study-with-us/undergraduate/singapore/future-students/degrees/credit-transfer-arrangements</p> <ul style="list-style-type: none"> • Advanced standing is awarded for the successful completion of: <ul style="list-style-type: none"> • Diploma in Network Defence and Forensic Countermeasures (valid Dec '21) • Diploma in InfoComm Technology (valid Dec '22)

Edith Cowan University, Australia

<p>Bachelor of Science (Cyber Security) Bachelor of Science (Exercise and Sports Science)</p>	<p>Refer to MER from the University</p> <p>Australian education providers such as ECU, assesses overseas qualifications for admission to study. For guidance and advice in this regard, ECU consults with AEI NOOSR. The Australian Education International National Office of Overseas Skills Recognition (AEI NOOSR), a branch of the Department of Education, Training and Youth Affairs, provides guidelines, advice and assistance to Australian education providers in relation to the recognition of overseas qualifications and skills. https://internationaleducation.gov.au/services-and-resources/pages/qualifications-recognition.aspx</p> <p>Students graduated from PSB Academy's Diploma in Sport and Exercise Sciences are granted with a total of 120 credit units to enter Bachelor of Science (Exercise and Sports Science).</p> <p>ECU's Advanced Standing Database: https://apps.wcms.ecu.edu.au/advanced-standing/course-search</p>
--	--

<p>Master of Science in Engineering Business Management</p>	<p>Refer to MER from the University</p>
<p>Bachelor of Arts with Honours in Accounting and Finance Bachelor of Arts with Honours in Business and Finance Bachelor of Arts with Honours in Business and Marketing Bachelor of Arts with Honours in Media and Communications Bachelor of Science with Honours in Global Logistics (Top-up)</p>	<p>Refer to MER from the University</p> <ul style="list-style-type: none"> • Advanced standing is awarded for the successful completion of: <ul style="list-style-type: none"> • Suite of PSB Academy Diploma in Business Administration programmes • Diploma in Electrical Engineering Technology • Diploma in Mechanical Engineering Technology • Diploma in Infocomm Technology • Or equivalent • For the successful completion of Diploma in Global Supply Chain Management, students are eligible for articulation entry to Year 2 of Bachelor of Science with Honours in Global Logistics (Top-Up) (valid till: 27 Sep 2023) • Advanced standing from other International Tertiary Institution: <ul style="list-style-type: none"> • For the successful completion of Advanced Diploma of Commerce – International Trade Program (ITP) Concentration from Lixin University, students are eligible for articulation entry to Year 2 of the following programmes: <ul style="list-style-type: none"> • Bachelor of Arts with Honours in Business and Marketing • Bachelor of Arts with Honours in Business and Finance • Bachelor of Arts with Honours in Digital Marketing • Bachelor of Science with Honours in Global Logistics (Top-Up) • For the successful completion of Advanced Diploma of Commerce – Tourism and Hospitality Management (THM) Concentration from Lixin University, students are eligible for articulation entry to Year 2 of the following programmes: <ul style="list-style-type: none"> • Bachelor of Arts with Honours in Business and Marketing • Bachelor of Arts with Honours in Business and Finance • Bachelor of Arts with Honours in International Hospitality and Tourism Management • For successful completion of Diploma in Business Administration – Chengdu Radio and Television University by Sichuan University, students are eligible for articulation entry to Year 2 of Bachelor of Arts with Honours in Business and Finance • For successful completion of Advanced Diploma in Business by Raffles Design Institute, students are eligible for articulation entry to the final year of Bachelor of Arts with Honours in Business and Marketing • For the successful completion of Diploma in Commerce from Jesselton College, students are eligible for articulation entry to Year 2 of the following programmes (valid till: 5 Sep 2023): <ul style="list-style-type: none"> • Bachelor of Arts with Honours in Business and Marketing • Bachelor of Arts with Honours in Business and Finance • For the successful completion of ATHE Level 5 Diploma in Business and Management, ATHE Level 5 Extended Diploma in Business and Management and ATHE Level 5 Extended Diploma in Business and Management (Gen.Ed) from Syncreative Consultancy Services, students are eligible for articulation entry to Year 2 of the following programmes (valid till 13 April 2025):

	<ul style="list-style-type: none"> • Bachelor of Arts with Honours in Business and Marketing • Bachelor of Arts with Honours in Accounting and Finance • Bachelor of Arts with Honours in Business and Finance • Bachelor of Arts with Honours in Digital Marketing • Bachelor of Science with Honours in Global Logistics (Top-Up) • Bachelor of Arts with Honours in International Hospitality and Tourism Management • For the successful completion of Diploma in Business from Crescendo International College, students are eligible for articulation entry to Year 2 of the following programmes (valid till 2 Sep 2025): <ul style="list-style-type: none"> • Bachelor of Arts with Honours in Business and Marketing • Bachelor of Arts with Honours in Accounting and Finance • Bachelor of Arts with Honours in Business and Finance • For the successful completion of Diploma in Airline Services from Crescendo International College, students are eligible for articulation entry to Year 2 of the following programmes (valid till 2 Sep 2025): <ul style="list-style-type: none"> • Bachelor of Arts with Honours in International Hospitality and Tourism Management • For the successful completion of CTH Level 4 Diploma in Hospitality Management and Diploma in Tourism Management from College of Khamti, students must take ONE (1) DAY of CU Marketing Workshop before eligible for articulation entry to Year 2 of the following programmes (valid till 24 Aug 2025): <ul style="list-style-type: none"> • Bachelor of Arts with Honours in International Hospitality and Tourism Management • For the successful completion of CTH Level 5 Diploma in Hospitality Management and Diploma in Tourism Management from College of Khamti, students are eligible for articulation entry to Year 2 of the following programmes (valid till 24 Aug 2025): <ul style="list-style-type: none"> • Bachelor of Arts with Honours in International Hospitality and Tourism Management
<p>Bachelor of Engineering with Honours in Electrical and Electronic Engineering</p> <p>Bachelor of Engineering with Honours in Mechanical Engineering</p> <p>Bachelor of Science with Honours in Computing Science</p>	<ul style="list-style-type: none"> • For the successful completion of Diploma in Network Defence and Forensic Countermeasures, students are eligible for articulation entry to Year 2 of Bachelor of Science with Honours in Ethical Hacking and Cybersecurity (valid till: 9 Feb 2023) • For the successful completion of Diploma in Mechanical Engineering Technology, students are eligible for articulation entry to Year 2 of Bachelor of Engineering with Honours in Electro-Mechanical Engineering (valid till: 27 Sep 2023) • Students graduated from PSB Academy's Diploma in InfoComm Technology and PSB Academy's Diploma in Network Defence and Forensic Countermeasures are eligible for articulation entry to Year 2 of Bachelor of Science with Honours in Computing Science

Bachelor of Arts with Honours in Digital Marketing	<p>Refer to MER from the University</p> <ul style="list-style-type: none"> • Students graduated from PSB Academy's Diploma in Business Administration are eligible for articulation entry to Year 2 of Bachelor of Arts with Honours in Digital Marketing • Students graduated from PSB Academy's Diploma in Business Administration (Marketing Management) are eligible for articulation entry to Year 2 of Bachelor of Arts with Honours in Digital Marketing • Students graduated from PSB Academy's Diploma in Business Administration (Digital Marketing) are eligible for articulation entry to Year 2 of Bachelor of Arts with Honours in Digital Marketing
--	--

Bachelor of Arts with Honours in International Hospitality and Tourism Management	<p>Refer to MER from the University</p> <ul style="list-style-type: none"> • Students graduated from PSB Academy's Diploma in Global Hospitality Management are eligible for articulation entry to Year 2 of Bachelor of Arts with Honours in International Hospitality and Tourism Management • Students graduated from PSB Academy's Diploma in Tourism and Hospitality Management are eligible for articulation entry to Year 2 of Bachelor of Arts with Honours in International Hospitality and Tourism Management
---	---

Edinburgh Napier University, United Kingdom

Master of Science International Business Management	Refer to MER from the University
---	----------------------------------

<p>Bachelor of Arts (Honours) Hospitality and Tourism Management (Top-Up)</p> <p>Bachelor of Arts Hospitality and Tourism Management (Top-Up)</p> <p>Bachelor of Science Sport and Exercise Science (Top-Up)</p>	<p>Refer to MER from the University</p> <ul style="list-style-type: none"> • Advanced standing is awarded for the successful completion of PSB Academy Diploma in Tourism and Hospitality Management or equivalent • Students graduated from PSB Academy's Diploma in Business Studies (E-Learning) are eligible to enter Year 3 of Bachelor of Arts Business Management (Top-Up) • Students graduated from PSB Academy's Diploma in Sport and Exercise Sciences are eligible for articulation entry to Year 2 of Bachelor of Science Sport and Exercise Science (Top-Up) (valid until 3 Jun 2026)
--	---

La Trobe University, Australia

<p>Bachelor of Biomedical Science</p> <p>Bachelor of Science (Molecular Biology and Applied Chemistry)</p> <p>Bachelor of Science (Molecular Biology and Biotechnology)</p> <p>Bachelor of Science (Molecular Biology and Pharmaceutical Science)</p>	<p>Refer to MER from the University</p> <p>https://www.latrobe.edu.au/study/apply/international/requirements</p> <p>Progression:</p> <p>Students graduated from PSB Academy's Foundation Diploma in Life Sciences are eligible for articulation entry Year 1:</p> <ul style="list-style-type: none"> • Bachelor of Science (Molecular Biology and Biotechnology) • Bachelor of Science (Molecular Biology and Pharmaceutical Science) • Bachelor of Science (Molecular Biology and Applied Chemistry)
---	--

Master of Biotechnology and Bioinformatics	<p>La Trobe University's standard entrance requirements (local and international students) are based on those specified on the Master of Biotechnology and Bioinformatics webpage: https://www.latrobe.edu.au/handbook/current/postgraduate/she/science-psych/coursework/shmbb.htm</p> <p>Graduates of the La Trobe University Bachelor of Science (BSc) programmes (delivered at PSB Academy) are eligible for articulation entry to Year 1 of the Master of Biotechnology and Bioinformatics (valid until 1 April 2026)</p>
--	--

Massey University, New Zealand

Master of Analytics	<p>Refer to MER from the University http://www.massey.ac.nz/massey/international/study-with-massey/entry-requirements/entry-requirements_home.cfm</p>
---------------------	--

Webster University, United States of America

Bachelor of Science in Business Administration	<p>Webster University's standard entrance requirements (local and international students) are based on those specified on the Undergraduate Admissions webpage: https://www.webster.edu/catalog/current/undergraduate-catalog/admission.html</p>
--	---



Language Proficiency

All Language Testing conducted by PSB Academy is final for entry and progression.

PSB Academy, Singapore	
Certificate in Business Management Certificate in Business Studies (E-Learning) Certificate in Sport and Exercise Sciences	<ul style="list-style-type: none"> • IELTS with an overall score of 5.5 • Paper-based TOEFL test score of 525/ Computer-based TOEFL test score of 196 / Internet-based TOEFL test score of 69-70 • TOEIC with a minimum score of 605 • Minimum Grade D7 in GCE O-Level English / Pearson Test for English (PTE-A) test score of 42 • IGCSE "Pass" in English • Minimum Grade C in SPM English / D7 in SPM1119 English / B6 in UEC English • Senior Middle School 2 English subject with 55% • Successful completion of PSB Academy Certificate in English Proficiency (CEP) Level 5 • An equivalent English language qualification
Certificate in Engineering Foundation Certificate in InfoComm Technology	<ul style="list-style-type: none"> • IELTS with an overall score of 5.5 • Paper-based TOEFL test score of 500 / Computer-based TOEFL test score of 173 / Internet-based TOEFL test score of 59-60 • TOEIC with a minimum score of 605 • Minimum Grade D7 in GCE O-Level English / Pearson Test for English (PTE-A) test score of 42 • IGCSE "Pass" in English • Minimum Grade C in SPM English / D7 in SPM1119 English/ B6 in UEC English • Senior Middle School 2 English subject with 55% • Successful completion of PSB Academy Certificate in English Proficiency (CEP) Level 5 • An equivalent English language qualification
Diploma in Business Administration Diploma in Business Administration (Accounting and Finance) Diploma in Business Studies (E-Learning) Diploma in FinTech Diploma in Media and Communications Diploma in Tourism and Hospitality Management	<ul style="list-style-type: none"> • IELTS with an overall score of 5.5 (with writing sub band no less than 5.0) • Paper-based TOEFL test score of 525 / Computer-based TOEFL test score of 196 / Internet based TOEFL test score of 69-70 with minimum score of 14 for writing • TOEIC with a minimum score of 605 • Minimum Grade D in Hong Kong CEE English • Minimum Grade C6 in GCE O-Level English / Pearson Test for English (PTE-A) test score of 42 • IGCSE "Pass" in English • Minimum Grade B in SPM English / C6 in 1119 SPM English / B6 in UEC English • Senior Middle School 3 English subject with 55% • Successful completion of PSB Academy Certificate In English Proficiency (CEP) Level 5 • An equivalent English language qualification • UTS Insearch Academic English 3 (eq. to IELTS 5.5)

<p>Diploma in Global Supply Chain Management</p> <p>Diploma in Graphic Design and Media</p>	<ul style="list-style-type: none"> • IELTS with an overall score of at least 5.5 (with writing sub band no less than 5.0) • Paper-based TOEFL test score of 550 / Computer-based TOEFL test score of 213 • TOEIC with a minimum score of 605 • IGCSE "Pass" in English • Senior Middle School 3 English subject with 55% • Successful completion of PSB Academy Certificate in English Proficiency (CEP) Level 5 • An equivalent English language qualification
<p>Diploma in Electrical Engineering Technology</p> <p>Diploma in Mechanical Engineering Technology</p> <p>Diploma in InfoComm Technology</p> <p>Diploma in Network Defence and Forensic Countermeasures</p> <p>Diploma in Sport and Exercise Sciences</p>	<ul style="list-style-type: none"> • IELTS with an overall score of 5.5 (with writing sub band no less than 5.0) • Paper-based TOEFL test score of 500 / Computer-based TOEFL test score of 173 / Internet-based TOEFL test score of 59-60 • TOEIC with a minimum score of 605 • Minimum Grade D7 in GCE O-Level English/ Pearson Test for English (PTE-A) test score of 42 • IGCSE "Pass" in English • Minimum Grade C in SPM English/ D7 in SPM 1119 English/ B6 in UEC English • Senior Middle School 3 English subject with 55% • Successful completion of PSB Academy Certificate in English Proficiency (CEP) Level 5 • An equivalent English language qualification • UTS Insearch Academic English 3 (eq. to IELTS 5.5)
<p>Foundation Diploma in Life Sciences</p>	<ul style="list-style-type: none"> • IELTS with an overall score of 5.5 (with writing sub band no less than 5.0) • TOEFL Paper-based test score of 525 / TOEFL Computer-based test score of 196 / TOEFL Internet based test score of 69 with minimum score of 14 in writing • TOEIC with a minimum score of 605 • Minimum Grade C6 in GCE O-Level English/ Pearson Test for English (PTE-A) test score of 42 • IGCSE "Pass" in English • Minimum Grade C in SPM English/ D7 in SPM 1119 English/ B6 in UEC English • Senior Middle School 3 English subject with 55% • Completed of PSB Academy Certificate in English Proficiency (CEP) Level 5 • An equivalent English language qualification • UTS Insearch Academic English 3 (eq. to IELTS 5.5)
<p>Postgraduate Diploma in Global Logistics and Supply Chain Management</p>	<ul style="list-style-type: none"> • IELTS score of 6.5 or acceptance of MOI if the Bachelor Degree is in English • Min 2 years working experience in English speaking environment

Coventry University, United Kingdom

Undergraduate Degree

- IELTS with an overall score of 6.0 (with no sub-band less than 5.5)
- Completion of PSB Academy's Certificate in Academic English
- Successful completion of Association of Business Executive (ABE) Level 4 / NCC Level 4 Diploma / Higher National Diploma (HND) level 4, with Certifications from Schools verifying medium of instructions is English

Postgraduate Degree

- IELTS with overall score of 6.5

Edinburgh Napier University, United Kingdom

- IELTS with an overall score of 6.0 (With no sub-band less than 5.5)
- Completion of PSB Academy's Certificate in Academic English

Edith Cowan University, Australia

Undergraduate Degree

- Year 12 English ATAR, English Literature ATAR Grade C or better; OR
- Special Tertiary Admissions Test; OR
- IELTS Overall Scores 6.0 with no individual Band less than 6.0; OR
- TOEFL Paper-Based (TWE) 4.5; OR
- TOEFL Internet-Based (TWE) 5; OR
- Pearson Test of English Academic Score of 52 with no scores less than 50 for courses with a current requirement of Academic IELTS 6.0; OR
- OET - A minimum score of B in each of four components

Postgraduate Degree

- Academic IELTS: Overall Scores 6.5 with no individual band less than 6.0; OR
- TOEFL Minimum score of 573, including Test of Written English of 5.0 or better; OR
- TOEFL Internet Based: Minimum score of 84, with no individual score less than 17; OR
- Pearson Test of English (PTE): PTE Academic 58, with no score less than 50 for postgraduate standard entry courses
- English language test scores must be less than 2 years old at the date of application to Edith Cowan University. Details of the policy and information on any other English tests accepted by the University can be found at: <http://www.ecu.edu.au/future-students/course-entry/english-competency#toggle-2>

La Trobe University, Australia

- IELTS with an overall score of 6.5 (with no sub-band less than 6.0)
- TOEFL Paper-based Test - a minimum overall score of 550 with a score of 5 or more in the Test of Written English
- TOEFL Internet-based Test - a minimum Overall score of 64 with 13 in Reading, 12 in Listening, 18 in Speaking and 21 in Writing
- Pearson Test of English (Academic) (PTE) - Overall score of 50 with no communicative skill score less than 50

Massey University, New Zealand

Postgraduate Degree

- IELTS 6.5 no less than 6.0



The University of Newcastle, Australia

Undergraduate Degree (except Bachelor of Communication):

- IELTS score of 6.0 (with no sub-band less than 6.0)
- Paper-based TOEFL test score of 525 with a Test of Written English (TWE) of 4.0 / Internet-based TOEFL test score of 80 with no subtest score less than 20
- Grade C or better in GCE A-Level General Paper
- Pearson Test for English (PTE-A) test score of 57 with no subscore less than 50
- Completion of International Baccalaureate Diploma with a minimum requirement of English A2 at the higher level; or English A: Literature or English A: Language and Literature
- C Pass in the “Use of English” in Hong Kong Advanced Level Examination
- The successful completion of an Australian Year 12 programme
- A letter from the institution certifying that English is the medium of instruction for the entire course
 - i. The letter must be written on the Institution’s letter head with an original school stamp; and
 - ii. The applicant must have completed the course within 5 years of application; and
 - iii. The institution must be one of the recognised institutions approved by The University of Newcastle, Australia

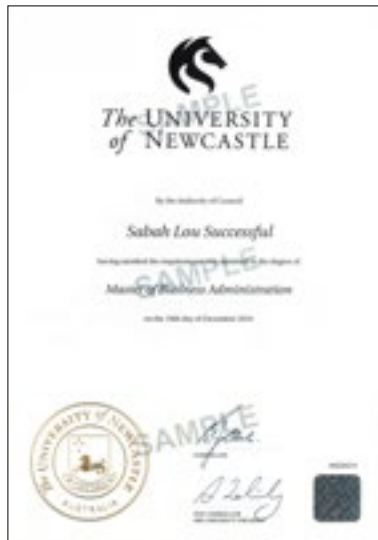
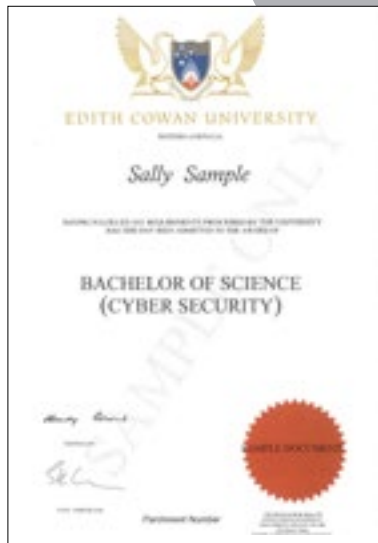
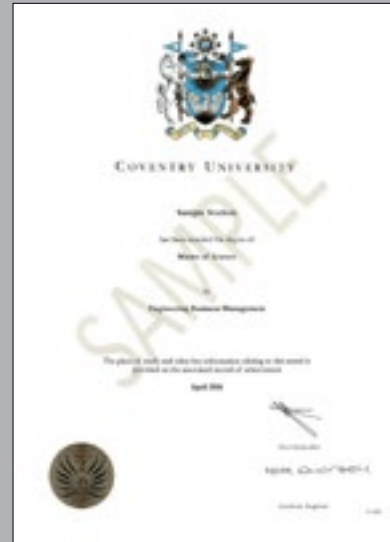
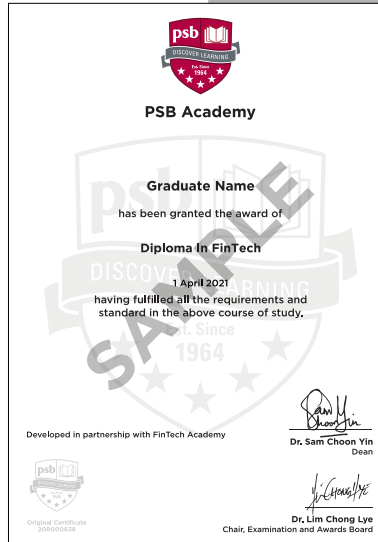
Please note: This final condition is subject to approval from The University of Newcastle, Australia.

Bachelor of Communication and Postgraduate Degree:

- IELTS score of 6.5 (no sub-band less than 6.0)
- Paper-based TOEFL test score of 550 with a Test of Written English (TWE) of 4.5 / Internet-based TOEFL test score of 93 with no subtest score less than 21
- Pearson Test for English (PTE-A) test score of 64 with no subscore less than 59
- A letter from the institution certifying that English is the medium of instruction for the entire course.
 - i. The letter must be written on the Institution’s letter head with an original school stamp; and
 - ii. The applicant must have completed the course within 5 years of application; and
 - iii. The institution must be one of the recognised institutions approved by by The University of Newcastle, Australia

Please note: This final condition is subject to approval from The University of Newcastle, Australia.

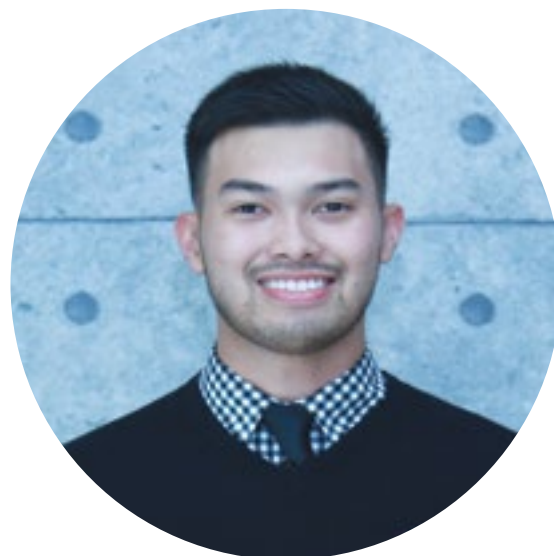
Academic Certificates



Testimonials

“I decided to pursue my MBA at PSB Academy because of the multiple accredited programmes it offers from world-renowned universities.”

*Vety Meng, Cambodia, Master of Business Administration,
The University of Newcastle, Australia, Class of 2020*



“In PSB Academy, I not only gained professional knowledge but also improved my soft skills.”

*Xu Xiao Mei, China,
Bachelor of Commerce,
The University of Newcastle,
Australia, Class of 2019*

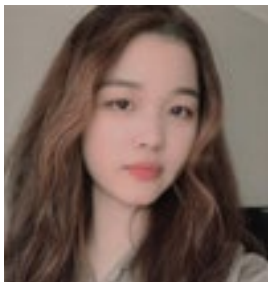
“Choosing to study at PSB Academy was because the school is in Singapore, which is closer to my home country, Indonesia. Coventry University is also a reputable UK university that offered engineering degrees.”

*Samantha Sutanto, Indonesia,
Bachelor of Electrical and
Electronic Engineering, Coventry
University, Class of 2020*



“The PSB Academy campus has an excellent laboratory environment with some of the industry’s most commonly used equipment. I’ve attended practical classes where I would learn about molecular genetics, microbiology, organ systems, pharmacy, etc.”

Byun Hyeryung, Korea, Bachelor of Biomedical Science, La Trobe University, Class of 2022



“PSB Academy is a well-recognised institute with good facilities, brilliant lecturers and a student-friendly environment. Moreover, I like the student social groups and societies, as well as the student navigator and student welfare programmes.”

Sanoj Withanage, Sri Lanka, Bachelor of Science (Cyber Security), Edith Cowan University, Class of 2022



“The Master of Analytics at Massey University offers me the choice of a marketing pathway, which allows me to not only learn the concepts of data analytics but also its application in the field I’m interested in.”

Pham Hoài An, Vietnam, Master of Analytics, Massey University, Class of 2020





“PSB Academy is a school that provides more than just studies; it has a diverse group of student bodies where I can take part and experience campus life.”

Shafeek Ahamed, India, Bachelor of Science with Honours in Ethical Hacking and Cybersecurity, Coventry University, Class of 2022

“The lecturers have taught me to learn and follow scientific facts from the books, and at the same time to be open to exploring new possibilities through the research process and experiments.”



Bryan Yong, Malaysia, Bachelor of Science Sport and Exercise Science, Edinburgh Napier University, Class of 2016

“The first time I set foot on PSB Academy’s City campus, the unique interior design of the campus gave me a good feeling that I found what I was looking for.”

Pamela Perfecto, Philippines, Bachelor of Business, The University of Newcastle, Australia, Class of 2022



“The course was very comprehensive. It even helped me develop other facets such as leadership and tenacity. The tutors and lecturers would also always go the extra mile to make sure that we understood what was being taught.”

Kaung Htet Wint Kyu, Myanmar, Bachelor of Information Technology, The University of Newcastle, Australia, Class of 2017





How to Apply



1 Submit Application

Please ensure that your application reaches us at least 2 months before course commencement.



2 Accept Offer

Students will be notified of their application outcome within 10 working days. Successful applicants will receive their offer pack via email:

- Unconditional Letter of Offer
- Student Contract
- Student Activity Indemnity Form
- Private Education - Advisory Note to Students
- Instructions on Course Acceptance (International Students)

To accept our offer, please sign the student contract and forms.

3 Apply for Student's Pass

After receiving your signed Student Contract, we will help you submit your Student's Pass application to Singapore Immigration and Checkpoints Authority (ICA). You will be notified of the outcome within 4 weeks via email.

4 Pay Course Fees

Once your Student's Pass application is approved in-principle by ICA, you will be required to make payment for the first instalment of your course and other relevant fees, as indicated in Schedule B of the Student Contract.

All payments for applications, course fees and other services offered by PSB Academy should be made only to us.

Please ensure the invoice / application # is entered as the bill reference. If you are unsure of your invoice / application #, please email your mode of payment and transaction reference number to contactus@psb-academy.edu.sg once you have made payment.

A payment receipt can be provided to prospective students on request. Please allow three working days after we have verified your payment.

Convenient payment modes for international students:

- **Interbank Transfer / Telegraphic Transfer / Swift**

Account Name: PSB Academy Pte Ltd
Bank Name: United Overseas Bank Limited
Bank Branch: UOB Main Branch
Branch Address: 80 Raffles Place, UOB Plaza 1, Singapore 048624
Account Number: 451-306-636-2
Bank Code: 7375 / Branch Code: 001
Swift Code: UOVBSGSG (for international students)

- **Flywire (International Currencies)**

To protect our students from impersonation scams and phishing attacks, Flywire payment is enabled only through our PSB Academy website. Kindly use the link psb-academy.edu.sg/flywire for your security. If you detect any suspicious requests for personal information or payment, please inform us immediately at contactus@psb-academy.edu.sg

- **PayNow (Bank Mobile App)**

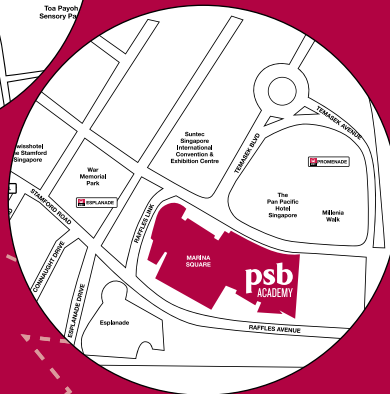


We offer other payment modes, such as credit card and cash on-campus.



STEM Campus

11 Lor 3 Toa Payoh,
Jackson Square, Blk A,
Singapore 319579
(Near Braddell, Toa Payoh &
Caldecott MRT Stations)



City Campus

6 Raffles Boulevard
Marina Square, #03-200
Singapore 039594
(Near Promenade, Esplanade &
City Hall MRT Stations)



PSB Academy

+65 6390 9000

admissions@psb-academy.edu.sg

psb-academy.edu.sg



Cert No: EDU-2-2005
Validity: 14/05/2018 - 13/05/2022

PSB Academy
Reg. No. 200704825E
20/05/2018 - 19/05/2022

All information is accurate as of 1 October 2021. PSB Academy and our academic partners may change the information at any time without prior notice. For updates to this prospectus, please visit <https://www.psb-academy.edu.sg/courses/prospectus-errata>