



International Medical School

— Clinical training in the US or UK —



St. George's University
SCHOOL OF MEDICINE

Grenada, West Indies



WHAT'S INSIDE

SGU Is The #1 Provider Of Doctors Into First-Year US Residencies For The Last 12 Years Combined.*

*Data as April 2021

PAGE
3

SGU President's Welcome Message

PAGE
6

School of Medicine

PAGE
7

Routes to an MD from St. George's University

PAGE
8

Entry Requirements

PAGE
9

India and UK Pathway Programs

PAGE
10

Student Support Services

PAGE
11

Student Support Programs

PAGE
12

SGU International Profile

PAGE
13

SGU International Graduates

PAGE
14

Welcome to Grenada

PAGE
16

Partner Hospitals for Clinical Rotations





“

Welcome to St. George's University. Since its founding in 1976, St. George's University has evolved into a top center of international medical education, drawing students and faculty from over 150 countries to our campus on the beautiful island of Grenada.

For more than 40 years, St. George's University has provided the world with highly trained doctors, offering a US-centric medical degree program with entry points for students from any education system around the world.

Beyond the breadth of our programs, St. George's University provides a unique student-centric campus focused on your success. Our award-winning Department of Educational Services serves close to 100 percent of the University's students, and new, purpose-built spaces make for an optimal learning environment.

You will find that the unique academic opportunities available here continue to attract the highest quality students, teachers, and researchers from around the world.

Dreams become a reality every year at St. George's University. We are a truly international institution that boasts a long, proud, and verifiable history of academic success. SGU has a unique global perspective and is well equipped to help you achieve your fullest potential.

We look forward to welcoming you to campus.

”

A handwritten signature in black ink, which appears to read "G. Richard Olds". The signature is fluid and cursive.

G. RICHARD OLDS, MD, MACP
PRESIDENT, ST. GEORGE'S UNIVERSITY





St. George's University
campus in Grenada, West Indies

SCHOOL OF MEDICINE

MEDICAL EDUCATION WITH GLOBAL IMPACT

St. George's University has been providing the world with highly trained doctors for more than 40 years. Founded as an independent School of Medicine in 1976, we pioneered the concept of international medical education. As a medical school with a worldwide mission, SGU draws students and faculty from more than 150 countries who want to incorporate a multicultural perspective into their medical careers for a truly global impact. Our graduates have been licensed in all 50 US states and Canada and have practiced in more than 50 countries around the world.

In addition to four-, five-, six-, and seven-year Doctor of Medicine programs, the School of Medicine awards master's degrees in public health, epidemiology, microbiology, and other sciences, as well as PhDs in many disciplines. The School of Medicine is committed to student success within an international academic environment.



18,000

SCHOOL OF MEDICINE GRADUATES

In more than four decades, we have graduated more than 18,000 physicians to the global healthcare system.

70+

LEADING HOSPITALS

and health systems in two countries offer clinical and ambulatory training.

1,500

SCHOOL OF MEDICINE CLINICAL FACULTY

1,500 clinical faculty at more than 70 hospitals and health systems in the US and UK.

465

BASIC SCIENCES FACULTY

Our team of 465 Basic Sciences faculty members is located on the True Blue campus in Grenada and is dedicated to the success of our students.

95%

FIRST-TIME PASS RATE

on the USMLE Step 1 over the last three years for SGU's international students.¹

¹Average of 2018, 2019, and 2020 scores. International students are non-US, non-Canadian students.

94%

OF ELIGIBLE US 2020 GRADUATES

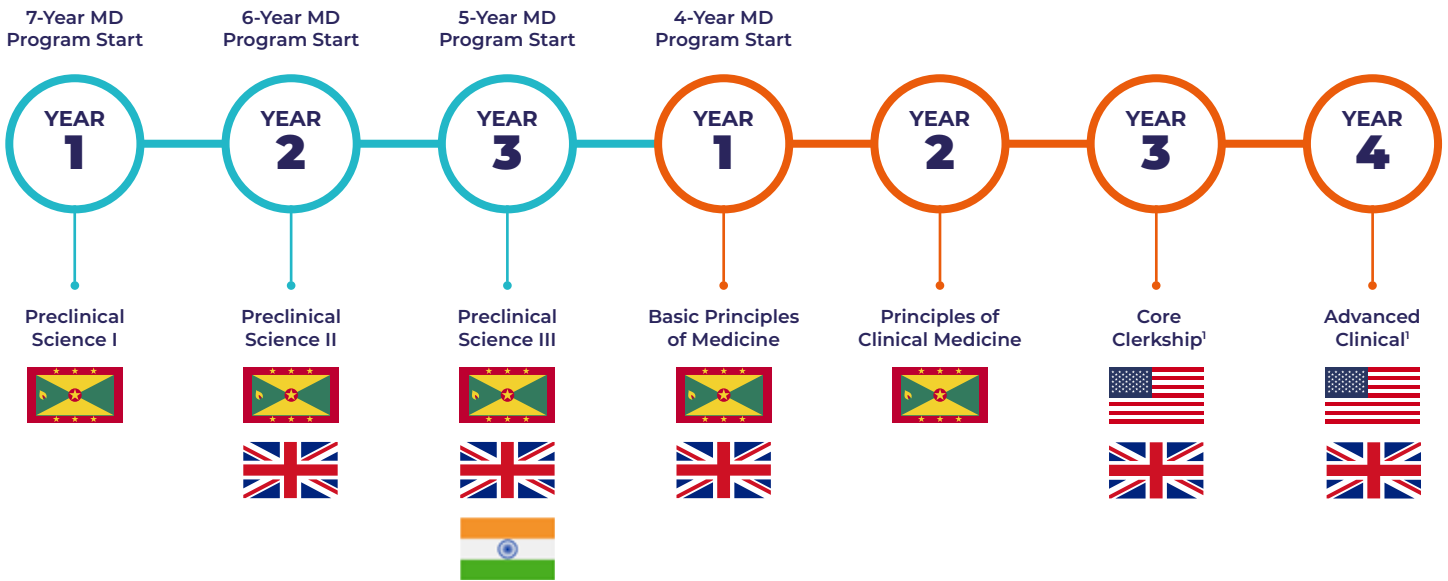
who applied for a US postgraduate position obtained one at the time of graduation.²

²Data as of September 2020.

ROUTES TO AN MD FROM ST. GEORGE'S UNIVERSITY

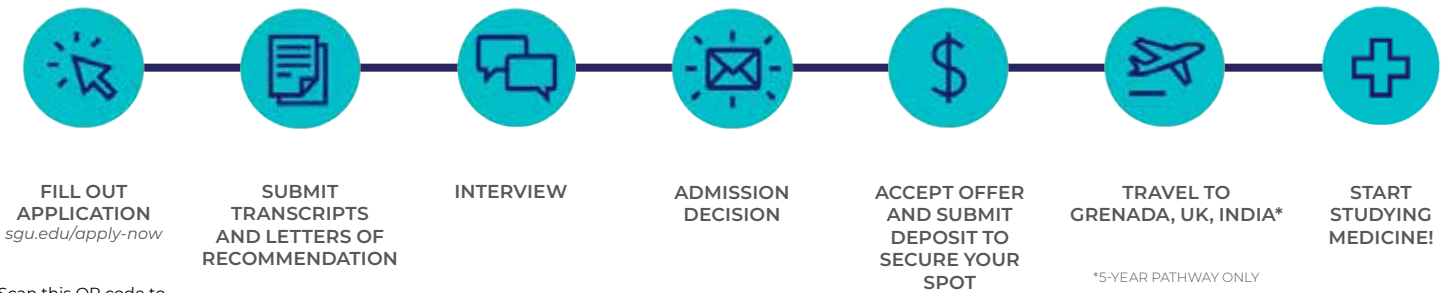
PRECLINICAL PROGRAM

MD PROGRAM



Students in the SGU/NU 5-year program will spend 1 year in preclinical, 1 year in basic sciences and may do 6 months of clinical rotations in the UK. Students in the SGU/NU 4-year program will spend 1 year in basic sciences and up to one year in the UK. Clinical rotations may not be done in the UK for the last six months of year four/five.

APPLICATION PROCESS



Scan this QR code to submit the application



Entry Requirements

DOCTOR OF MEDICINE PROGRAM OUTLINE

ENTRY POINTS, REQUIREMENTS, AND CURRICULUM

Entry points are available for students from any education system around the world—including a four-year program for those entering with an undergraduate degree. Students presenting secondary school (or Advanced Level, International Baccalaureate, etc.) credentials are placed into the five-, six- or seven-year programs based on academic background and performance.

ENGLISH LANGUAGE REQUIREMENTS

If English is not their principal language, the applicant must have achieved a 7.0 on each band of the International English Language Testing System (IELTS), or a minimum score of 100 on the Test of English as a Foreign Language (TOEFL). We also accepts other English exams:

- **Password-Skills** – Scoring is the same as IELTS scoring for direct entry
- **C1 Advanced** – A score of 186 overall is required for direct entry
- **PTE Academic** – A score of 85 overall is required for direct entry

Medical College Admission Test (MCAT) Exemption

International students are exempt from the MCAT admission requirement. Based on the complexities of different curricula from around the world, we do not encourage our non-US and non-Canadian citizens or permanent residents to sit the MCAT. It is a US-centric exam. SGU does recommend international students sit the UCAT to provide additional quantitative information on your academic and science foundation. The UCAT is not mandatory, but is a suggestion.



PROGRAM	QUALIFICATIONS	ENTRY POINT
4-Year MD Program	Bachelor's degree in the requisite sciences	Medical Year 1
5-Year MD Program	<p>Advanced Levels: Minimum 3 subjects with A's and B's in Biology, Chemistry, and either Math or Physics; Math or Physics can be accepted at AS level with strong non-science third A level.</p> <p>Approved foundation programs: SGU recognizes and approves a range of science/medical pathway programs.</p> <p>Full IB Diploma: Requires a minimum score of 32 points; 3 HL science subjects recommended; minimum of 2 HL subjects required, which must include Chemistry and Biology; results 5 or higher.</p> <p>India 10+2 or CBSE: Minimum of 80% average with no grade below 80% in Biology, Chemistry, Math, Physics, and English.</p>	Preclinical Year 3
6-Year MD Program	<p>Secondary school diploma: Strong science performance, SABIS High School.</p> <p>Further education: AS Levels, Baccalaureate, South Africa Matric, Higher School Exam, Irish Leaving Certificate.</p>	Preclinical Year 2
7-Year MD Program	<p>IGCSE: B or better in minimum 6 subjects, which include Biology, Chemistry, Math, Physics, and English</p> <p>WASSCE</p>	Preclinical Year 1



INDIA PATHWAY: A 5-YEAR PATHWAY WITH RAMAIAH



St. George's University
SCHOOL OF MEDICINE
Grenada, West Indies



RAMAIAH

Ramaiah Group of Institutions, India, and St. George's University are working together to enable aspirants from India and around the world to obtain an internationally recognized degree and practice medicine in the US, UK, or India. During the five-year pathway, students have the opportunity to experience global healthcare systems across several countries: Year 1 in India, Year 2 in the UK or Grenada, Year 3 in Grenada, and Years 4 and 5 in the US or UK.

The one-year Preclinical Certificate program at Ramaiah curriculum is closely aligned with what preclinical students are taking at the SGU campus in Grenada or at Northumbria University, our partner university in the UK. During this first year in India, students are offered a variety of opportunities to prepare for their studies and life in Grenada, or a combination of Grenada and the UK, in the following four years of their MD study.

For more information, visit www.sgu.edu/ramaiah.



UK PATHWAY: 4-, 5-, 6-YEAR MD WITH NORTHUMBRIA UNIVERSITY



St. George's University
SCHOOL OF MEDICINE
GRENADA, WEST INDIES



Northumbria University
NEWCASTLE

FOUR-, FIVE-, AND SIX-YEAR MD PROGRAMS

Thanks to a partnership that exists between SGU School of Medicine and Northumbria University (NU) in Newcastle, United Kingdom, SGU gives international students the opportunity to earn an MD and complete up to 50 percent of their degree in the UK. Four-, five, and six-year MD students who begin their studies at NU will complete one year of integrated basic sciences at our technologically advanced campus in Grenada.

Staff from both SGU and NU teach on the same two-year basic sciences program schedule. As the programs mirror each other, entry requirements, curriculum, and testing cadence all follow the same principles and schedules, allowing students to receive the exact same educational foundation regardless of location.

SGU and NU are offering three different pathway-stage programs that start in the UK: a four-year MD program (MD4), a five-year MD program (MD5), and a six-year MD program (MD6). The length of the program depends on the candidate's entry qualifications. Each program allows students to complete the first part of their education at NU in Newcastle, and to obtain a Doctor of Medicine (MD) degree awarded by SGU on graduation.

For more informations, visit www.sgu.edu/nu.



Student Support Services

A STUDENT-CENTRIC CAMPUS FOCUSED ON SUCCESS

St. George's University helped establish the concept of international medical education and remains at the forefront of educating students to meet the demands of the modern practice of medicine. Students at SGU receive an unparalleled level of support throughout their medical education, from student support services during the preclinical and basic sciences years to ongoing support from the Office of Career Guidance and Student Development through the clinical years and beyond. The way we educate and structure our programs creates professionals—and the proof is in our graduate success.

AWARD-WINNING DEPARTMENT OF EDUCATIONAL SERVICES

St. George's University's Department of Educational Services (DES), a pioneer in the development of education support services, provides access to 290 small study groups to help ensure success in a student's chosen field of study. Time management, study and test-taking skills, and help with reducing anxiety are just a few of the services offered by DES that help turn students into highly efficient learners. Recently recognized by the National Academic Advising Association (NACADA) for the Academic Enhancement (AEP) Program, this unique and highly effective faculty is the largest on campus, and is an important component of our student and graduate success. Close to 100 percent of the University's students avail themselves of the support offered through a variety of innovative programs.

OFFICE OF CAREER GUIDANCE AND STUDENT DEVELOPMENT

The Office of Career Guidance and Student Development (OCG) assists students in the Doctor of Medicine program to find their way through postgraduate medical training and licensure procedures effectively and successfully. The OCG is staffed by faculty and alumni who can advise students on preparing for licensing examinations and offer counseling in specialty and residency selection, as well as the residency application process in the United States and the United Kingdom. Students are provided advice on the importance of preparation for the required comprehensive examinations as well as the USMLE Step 1, examination requirements, clinical rotation time schedules, and obtaining postgraduate training.

Facilitated by the Department of Educational Services (DES), St. George's University offers several foundation and support programs to prepare students for the study of medicine and veterinary medicine. DES works closely with students to provide advisement and learning aid services as they proceed through the following programs.



Student Support Programs



Interactive Team Instruction

The Interactive Team Instruction (ITI) program is a unique program that offers personalized academic attention to address a student's specific learning strengths and weaknesses. Currently for remote learning:

- Students receive supplemental instruction in small group discussion sessions designed around the lecture content.
- On campus an 8:1 student-to-faculty ratio, students progress through their basic sciences in an intimate and interactive team-based discussion setting led by MD faculty.
- Course material is presented during the ITI program through a combination of blended learning and flipped classroom models.
- Content is enhanced and reinforced with several multiple-choice questions and clinical cases promoting the integration of concepts and long-term retention.

Academic Enhancement Program

Upon acceptance to the MD program, many students are placed into the Academic Enhancement Program (AEP). This specialized program is designed to support students' transition to the basic sciences to enhance academic success and build lifelong learning skills for the medical professions. The AEP gives them access to workshops, group review sessions, and personal advising. Students are placed into the program for a variety of reasons, but each student benefits from individual guidance.



SGU FACTS

5:1

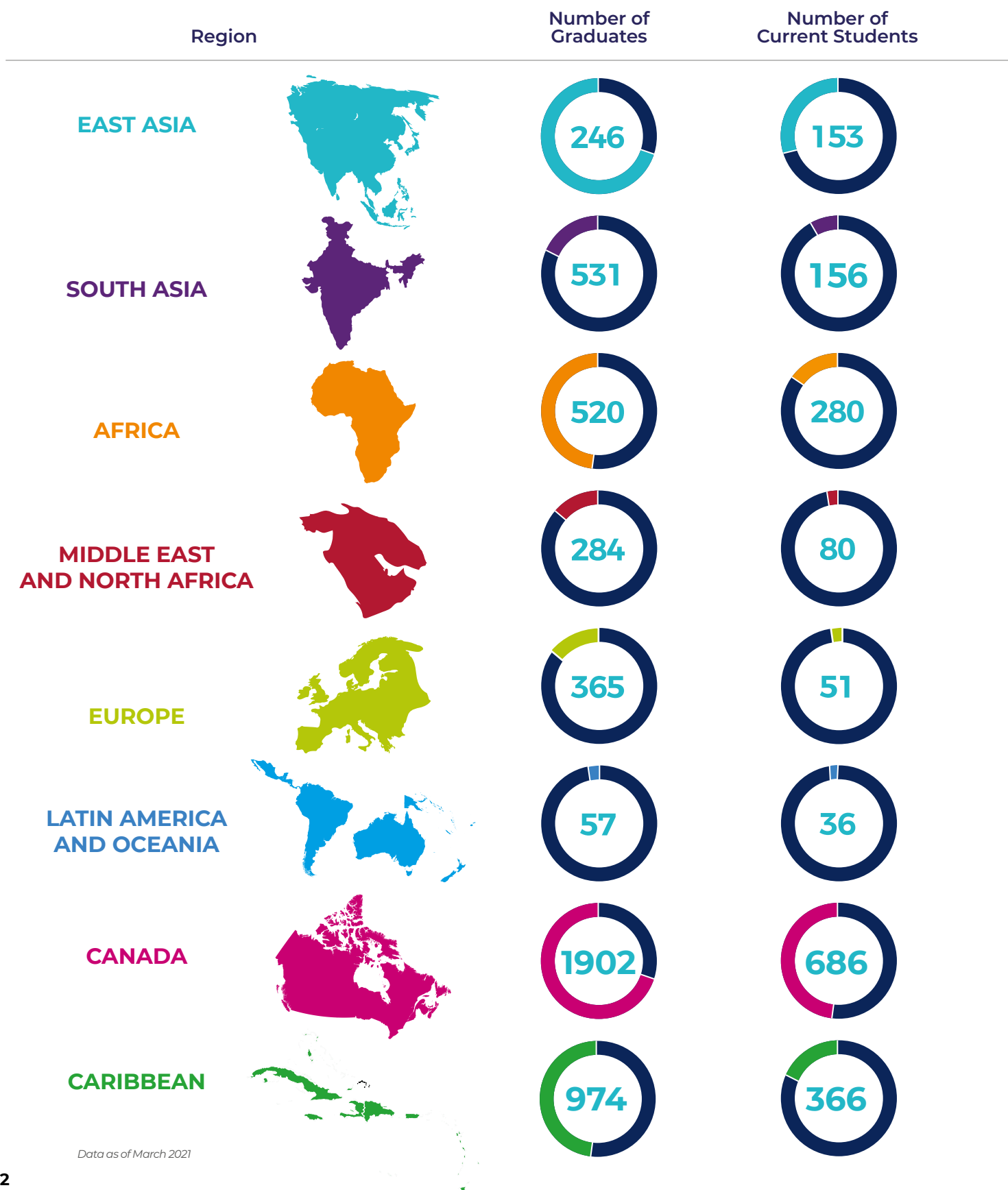
students-to-cadaver
ratio in anatomy lab

50:50

ratio of lectures to
small group sessions

SGU International Profile

SGU School of Medicine currently has a student population of 6,697, of which 77% are US citizens, and the rest of 23% are non-US citizens.



Data as of March 2021

SGU International Graduates



Dr. Gifty-Maria Ntim
4-Year Medicine Program (MD4)
SGU Class of 2007
Ghana

“I would highly recommend SGU without hesitation. It allowed me to realize my dreams. It's added to my growth as a person and as a physician.”



Dr. Boonyanuth Maturostrakul
4-Year Medicine Program (MD4)
SGU Class of 2017
Thailand

“I liked the SGU adventure. I really wanted to travel, and to come to the States, to Grenada, and to have spent my first year in England, it was such a dream. If you try hard enough, your dreams will come true.”



Dr. Su Young Park
4-Year Medicine Program (MD4)
SGU Class of 2014
South Korea

“My experiences in Grenada provided insights and skills that have prepared me to work with a variety of populations and in different environments. When I went to complete my clerkships in New York and New Jersey hospitals and then went on to become a resident, I truly felt the value of SGU's training background.”



Dr. Dhruv Gupta
4-Year Medicine Program (MD4)
SGU Class of 2018
India

“With my international upbringing, I was drawn to and enrolled in the SGU/NU program. England was a wonderful experience, and between basic sciences and clinicals, I really enjoyed living and learning in three different countries. Also, I was able to participate in the India selective in Karad, during which we really got to see the challenges that some physicians have to overcome to provide health care for their patients. It's a situation in which you're really asked to step out of your comfort zone.”



Dr. Joseph El-Khoury
4-Year Medicine Program (MD4)
SGU Class of 2002
Lebanon

“SGU was an important and solid steppingstone for me. It was an incredible mix of a studious and serious academic environment alongside Caribbean sunsets, wonderful food, and beautiful scenery. I have very fond memories of my time there.”



Dr. Ish Saxena
4-Year Medicine Program (MD4)
SGU Class of 2013
United Kingdom

“SGU gave me a great base in terms of scientific knowledge and I draw on that in my day to day work. It was also the starting point for my clinical skills and I learned a breadth and range of topics I wouldn't have benefited from elsewhere.”



Dr. Njambi Mathenge
5-Year Medicine Program (MD5)
SGU Class of 2014
Kenya



Dr. Onyemaechi Okolo
4-Year Medicine Program (MD4)
SGU Class of 2015
Nigeria



Dr. Orapeleng Phuswane-Katse
5-Year Medicine Program (MD5)
SGU Class of 2011
Botswana



Dr. Salvior Mok
4-Year Medicine Program (MD4)
SGU Class of 2004
Hong Kong



Dr. Kansho Abiko
4-Year Medicine Program (MD4)
SGU Class of 2021
China, Japan



Dr. Evelyn Fang
4-Year Medicine Program (MD4)
SGU Class of 1998
Taiwan



Dr. Souzan El-Chazli
4-Year Medicine Program (MD4)
SGU Class of 2019
United Arab Emirates



Dr. Huseng Vefali
4-Year Medicine Program (MD4)
SGU Class of 2010
Turkey

Welcome to GRENADA



Location & Visa Requirements

Grenada is a beautiful Caribbean island located close to the US and Canada, and several major airlines offer direct flights to Grenada including British Airways, Virgin Atlantic, Air Canada, Condor, Delta, American Airlines, and JetBlue, for example:

- JetBlue Airways operates a non-stop service from New York: 4h 40mins
- American Airlines operates a non-stop service from Miami: 3h 45mins
- Delta Airlines operates a non-stop service from Atlanta: 4h 30mins
- Air Canada operates a non-stop service from Toronto: 5h 15mins
- British Airways & Virgin Atlantic offer direct flights from London : 11h 30mins
- Condor operates a non-stop flight from Frankfurt : 10h 15mins

Currently, citizens of 98 countries can visit Grenada for 1-3 months visa-free, including passport holders of all European Union countries, Australia, Bangladesh, Botswana, Brazil, China, Gambia, Ghana, Hong Kong, India, Japan, Kenya, Malawi, Malaysia, Singapore, South Africa, South Korea, Sri Lanka, Tanzania, Uganda, and UAE. Citizens of many other countries are eligible for visas upon arrival. The international airport in Grenada is just a short 10-minute drive from the SGU campus.

Government & Climate

English is Grenada's official language and it is a member of the Commonwealth realm. For more than 300 years, Grenada was an agricultural colony for European powers, first settled by France, then by Great Britain. It gained independence in 1974 and is governed by a parliamentary democracy.

Although the country has a tropical climate, it is located below the hurricane belt (the path that most hurricanes follow), and it experienced only 3 hurricanes in the last 50 years. The average temperature in Grenada is 27 degrees, and the average sea temperature is 29 degrees. The coldest month of the year is January with the average temperature of 25 degrees. Grenada is a perfect destination for a beach holiday, and the island has many beaches around its coastline, including the 3 km long Grand Anse Beach in St. George, often hailed as one of the best beaches in the world.



Safety & Healthcare

Grenada is a peaceful nation, and widely considered one of the most welcoming islands in the Caribbean. The US Department of State assigns Grenada a level-one rating, which means it is in the safest group out of the four groups that the US Department of State uses to classify countries by their average crime rates.

Similar to many North American universities, St. George's University has a professional Department of Public Safety, which coordinates closely with the Royal Grenadian Police Force. Security officers patrol university grounds 24 hours a day, 7 days per week, 365 days per year. SGU's safety department includes off-campus community patrols, a dedicated fire service, emergency medical response teams, and a K-9 patrol unit.

Students who study in Grenada can access quality healthcare through an on-campus clinic. University Health Services (UHS) provides medical support to the University community and offers a wide variety of services, from primary healthcare to off-hours urgent care. The clinic is open for routine services from Monday through Friday (7am to 7pm), and a duty nurse is on call 24 hours daily. In addition to on-campus resources, Grenada operates a national health service with a large central hospital and dozens of medical stations.

Food & Housing

SGU offers a variety of on-campus accommodation options for its students, and all students are required to live on campus in their first year of study. Students who wish to move after their first year are supported by SGU's experienced student service advisors, who keep a register of nearby off-campus accommodations built specifically for student needs.

Families and friends who would like to visit their students have a variety of high-quality accommodation options to choose from to suit all budgets, including hotels and beach resorts. True Blue Bay Boutique Resort, for example, is only a short walk from the SGU campus, while Sandals Grenada Resort and Radisson Beach Resort are only a 10-minute drive away from our campus.

Well known for its outstanding fish and seafood, cocoa, and spices, Grenada offers a large variety of food options, including Halal and vegetarian food. There is a good selection of supermarkets and local markets for fresh produce on the island. Restaurants offer Caribbean, Japanese, French, Italian, Thai, Indian, Chinese, American, and other international cuisines. On campus, there are many food options to choose from, ranging from small coffee shops to specialized restaurants, open daily from 6am to 11pm. After 11pm, students have access to local food delivery outlets.



SGU Partner Hospitals for Clinical Rotations

ST. GEORGE'S UNIVERSITY SCHOOL OF MEDICINE ISN'T JUST A TOP CARIBBEAN MEDICAL UNIVERSITY

We have developed long-standing relationships with many hospital and clinical center partners in the US and UK. These trusted connections allow our students to gain a breadth of knowledge with different patient populations in a variety of environments and gain valuable international experience. A student who makes full use of all of the clinical opportunities at SGU will graduate having experienced medicine as it is practiced and taught in Grenada, the US, and UK.

As part of our affiliated hospital network, SGU has clinical centers which are defined as a hospital that can provide at least four core clinical rotations, as well as providing sub-internships, primary care rotations and electives. SGU has a director of medical education, clerkship directors, faculty, and support staff at affiliated clinical sites to oversee our university-led clinical program. This ensures that our students' clinical training is cohesive and consistent.

SGU graduates have practiced in all US News and World Report's Top US Hospitals.*

**US News and World Report, 2020-2021*

CLINICAL TRAINING AT 70+ HOSPITALS IN TWO COUNTRIES



UNITED STATES

- | | |
|-------------|------------|
| California | Michigan |
| Connecticut | Nevada |
| Florida | New Jersey |
| Illinois | New York |
| Louisiana | Ohio |
| Maryland | Wisconsin |



UNITED KINGDOM

- | | |
|-----------------|---------------|
| Buckinghamshire | Kent |
| Dorset | London |
| Hampshire | Norfolk |
| Hertfordshire | West Midlands |

US Affiliated Hospitals and Clinical Centers

CALIFORNIA

HOSPITAL	ADDRESS	WEBSITE	CORE ROTATION
ALAMEDA HEALTH SYSTEM/ HIGHLAND CAMPUS	1411 East 31 st Street, Oakland, CA 94602	www.alamedahealthsystem.org	Medicine
ARROWHEAD REGIONAL MEDICAL CENTER	Medical Office Bldg, 3 rd Floor, Suite 301, 400 North Pepper Ave, Colton, CA 92324	www.arrowheadmedcenter.org	Medicine, Pediatrics, Ob/Gyn, Emergency Medicine, Surgery, Family Medicine, Psychiatry
BORREGO COMMUNITY HEALTH FOUNDATION	955 Harbor Island Drive, San Diego, CA 92101	www.borregomedical.org	Family Medicine
DESERT REGIONAL MEDICAL CENTER	1150 N. Indian Canyon, Palm Springs, CA 92262	www.desertregionalgme.com	Family Medicine, Internal Medicine, Surgery, Ob/Gyn, Pediatrics
DOCTOR'S HOSPITAL MODESTO	1441 Florida Ave, Modesto, CA 95350	www.dmc-modesto.com	Family Medicine, Internal Medicine, Surgery, Ob/Gyn, Pediatrics, Psychiatry
HEMET VALLEY MEDICAL CENTER	1117 E. Devonshire Ave, Hemet, CA 92543	www.hemetglobalmedcenter.com	Family Medicine, Medicine, Pediatrics, Ob/Gyn, Psychiatry, Surgery
MISSION COMMUNITY HOSPITAL	14850 Roscoe Blvd, Panorama City, CA 91402	www.mchonline.org	Family Medicine, Medicine, Pediatrics, Psychiatry, Ob/Gyn, Surgery
O'CONNOR HOSPITAL	2105 Forest Avenue, San Jose, CA 95128	www.oconnor.verity.org	Medicine, Ob/Gyn, Pediatrics, Surgery, Family Medicine (No 4 th yr electives)
SAN JOAQUIN GENERAL HOSPITAL	500 W. Hospital Road, French Camp, CA 95201	www.sanjoaquingeneral.org	Family Medicine, Medicine, Ob/Gyn, Pediatrics, Psychiatry, Surgery
ST. FRANCIS MEDICAL CENTER	3630 E Imperial Highway, Lynwood, CA 90262	www.stfrancis.verity.org	Family Medicine, Medicine, Ob/Gyn, Pediatrics, Psychiatry, Surgery (Cores Only)

CONNECTICUT

HOSPITAL	ADDRESS	WEBSITE	CORE ROTATION
ST. MARY'S HOSPITAL	56 Franklin Street, Waterbury, CT 06706	www.stmh.org	Surgery

FLORIDA

HOSPITAL	ADDRESS	WEBSITE	CORE ROTATION
CLEVELAND CLINIC HOSPITAL - FLORIDA	2950 Cleveland Clinic Blvd, Weston, FL 33331	www.ccf.org	<i>Medicine Electives, Sub-Internships</i>
COMMUNITY HEALTH OF SOUTH FLORIDA	10300 SW 216 th Street, Miami, FL 33190	www.chisouthfl.org	<i>Family Medicine, Pediatrics, Psychiatry, Ob/Gyn</i>
DELRAY MEDICAL CENTER	5352 Linton Boulevard, Delray Beach, FL 33484	www.delraymedicalctr.com	<i>Medicine, Surgery, Psychiatry</i>
LARKIN COMMUNITY HOSPITAL	Larkin Health Sciences Institute, 18301 N. Miami Avenue, Miami, FL 33169	www.larkinhospital.com	<i>Medicine, Psychiatry, Surgery, Family Medicine (4th yr only)</i>
NICKLAUS CHILDREN'S HOSPITAL	3100 S.W. 62 nd Ave, Miami, FL 33155	www.nicklauschildrens.org	<i>Pediatrics</i>
THE CENTER FOR HAITIAN STUDIES, HEALTH AND HUMAN SERVICES	8260 NE 2 nd Avenue, Miami, FL 33138	www.centerforhaitianstudies.org	<i>Family Medicine, Medicine, Pediatrics, Psychiatry, Ob/Gyn, Surgery</i>
THE UNIVERSITY OF FLORIDA	840 37 th Place, Suite 2 820 Medical Suite, Vero Beach, FL 32960	www.ufl.edu	<i>Psychiatry Electives</i>
WESTCHESTER GENERAL HOSPITAL	2500 SW 75 th Avenue, Miami, FL 33155	www.westchesterhospital.com	<i>Internal Medicine, Family Medicine, Pediatrics, Psychiatry, Ob/Gyn, Surgery</i>

ILLINOIS

HOSPITAL	ADDRESS	WEBSITE	CORE ROTATION
HUMBOLDT PARK HEALTH	1044 North Francisco Ave, Chicago, IL 60622	www.hph.care	<i>Family Medicine, Medicine, Pediatrics, Psychiatry, Ob/Gyn, Surgery</i>
MACNEAL HOSPITAL	3249 S. Oak Park Ave, Berwyn, IL 60402	www.macnealhospital.org/locations/macneal-hospital	<i>Internal Medicine</i>
SAINT ANTHONY HOSPITAL	2875 West 19 th Street, Chicago, IL 60623	www.saintanthonyhospital.org	<i>Family Medicine, Medicine, Ob/Gyn, Pediatrics, Psychiatry, Surgery</i>

LOUISIANA

HOSPITAL	ADDRESS	WEBSITE	CORE ROTATION
BATON ROUGE GENERAL	8585 Picardy Avenue, Baton Rouge, LA 70809	www.brgeneral.org	<i>Medicine, Surgery</i>

MARYLAND

HOSPITAL	ADDRESS	WEBSITE	CORE ROTATION
HOLY CROSS HOSPITAL	1500 Forest Glen Road, #1413 Silver Springs, MD 20910	www.holycrosshealth.org	Ob/Gyn
SAINT AGNES HOSPITAL	900 S. Caton Ave. - Box 42 Baltimore, MD 21229	www.stagnes.org	Medicine, Surgery
SHEPPARD PRATT HEALTH SYSTEM	6501 N. Charles Street, Baltimore, MD 21285	www.sheppardpratt.org	Psychiatry
SINAI HOSPITAL OF BALTIMORE	2401 W. Belvedere Avenue, Baltimore, MD 21215	www.lifebridgehealth.org/Sinai/ Sinai1.aspx	Medicine, Surgery and electives in Pediatrics
SPRING GROVE HOSPITAL CENTER	Administration Bldg, 55 Wade Avenue, Catonsville, MD 21228	www.springgrove.com	Psychiatry

MICHIGAN

HOSPITAL	ADDRESS	WEBSITE	CORE ROTATION
ASCENSION ST. JOHN HOSPITAL	2201 Moross Road, Detroit, MI 48236	www.stjohn.org/StJohnHospital	Medicine, Surgery, Ob/Gyn, Pediatrics, Psychiatry, Family Medicine (3 rd year only)

NEVADA

HOSPITAL	ADDRESS	WEBSITE	CORE ROTATION
RENOVN HEALTH	1155 Mill Street, Reno, NV 89502	www.renovn.org	Medicine, Family Medicine

WISCONSIN

HOSPITAL	ADDRESS	WEBSITE	CORE ROTATION
MERCY HEALTH SYSTEM	849 Kellogg Avenue, Janesville, WI 53546	www.mercycarehealthplans.com	Family Medicine, Ob/Gyn, Pediatrics, Psychiatry



NEW JERSEY

HOSPITAL	ADDRESS	WEBSITE	CORE ROTATION
ATLANTIC HEALTH SYS/ MORRISTOWN MEDICAL CENTER	100 Madison Avenue Morristown, NJ 07960	www.atlantichealth.org	Medicine, Pediatrics, Surgery
ATLANTIC HEALTH SYS/ OVERLOOK MEDICAL CENTER	99 Beauvoir Avenue, Summit, NJ 07902	www.atlantichealth.org	Family Medicine, Medicine, Ob/Gyn, Surgery
HACKENSACK UNIVERSITY MEDICAL CENTER	30 Prospect Avenue, Hackensack, NJ 07601	www.hackensackmeridian.org	Medicine, Surgery, Pediatrics, Ob/Gyn, Psychiatry, Emergency Medicine ELECTIVES BY EMAIL ONLY
HACKENSACK UMC MOUNTAINSIDE	799 Bloomfield Ave, Verona, NJ 07044	www.mountainsidenow.org/ residency/family-medicine.htm	Family Medicine, Medicine Electives, Sub-Internships
JERSEY SHORE UNIVERSITY MEDICAL CENTER	1945 Route 33, Neptune, NJ 07753	www.jerseyshoreuniversity medicalcenter.com/	Medicine, Ob/Gyn, Pediatrics, Psychiatry, Surgery
JFK MEDICAL CENTER	65 James Street, Edison, NJ 08818	www.jfkmc.org	Family Medicine, Neurology
NEW BRIDGE MEDICAL CENTER	230 East Ridgewood Ave, Paramus, NJ 07652	www.newbridgehealth.org	Psychiatry
NEWARK BETH ISRAEL MEDICAL CENTER	201 Lyons Avenue, Newark, NJ 07112	www.barnabashealth.org/ Newark-Beth-Israel-Medical-Center	Electives ONLY
RUTGERS HEALTH/ JERSEY CITY MEDICAL CENTER	355 Grand Street, Jersey City, NJ 07302	www.rwjbh.org/ jersey-city-medical-center/	Electives ONLY
ST. BARNABAS MEDICAL CENTER	94 Old Short Hills Rd, Livingston, NJ 07039	www.saintbarnabas.com	Electives ONLY
ST. JOSEPH'S UNIVERSITY MEDICAL CENTER	703 Main Street, Paterson, NJ 07503	www.sjhmc.org	Medicine, Pediatrics, Ob/Gyn, Psychiatry, Family Medicine, Surgery
ST. MICHAELS MEDICAL CENTER	111 Central Avenue, Newark, NJ 07102	www.cathedralhealthcare.org	Medicine
SAINT PETER'S UNIVERSITY HOSPITAL	254 Easton Avenue, New Brunswick, NJ, 08901	www.saintpetershcs.com	Medicine, Ob/Gyn, Pediatrics and Surgery
TRINITAS REGIONAL MEDICAL CENTER	225 Williamson Street, Elizabeth, NJ 07207	www.trinitashospital.org	Medicine, Ob/Gyn, Psychiatry, Surgery

OHIO

HOSPITAL	ADDRESS	WEBSITE	CORE ROTATION
THE JEWISH HOSPITAL	4777 East Galbraith Road, Cincinnati, OH 45236	www.jewishhospitalcincinnati.com	Medicine, Surgery
MERCY ST. VINCENT MEDICAL CENTER	Mercy Regional Academic Affairs, 2222 Cherry St., MOB #2, Suite 1300 Toledo, OH 43608	www.mercy.com/ locations/hospitals/toledo/ mercy-health-st-vincent- medical-center	Emergency Medicine, Family Medicine, Internal Medicine, Ob/Gyn, Pediatrics, Surgery

NEW YORK

HOSPITAL	ADDRESS	WEBSITE	CORE ROTATION
BRONXCARE HOSPITAL CENTER	1276 Fulton Avenue, Bronx, NY 10456	www.bronxcare.org	Family Medicine, Pediatrics, Psychiatry, Surgery
CONEY ISLAND HOSPITAL	2601 Ocean Parkway, Brooklyn, NY 11235	www.nychealthandhospitals.org/ coneyisland/	Medicine, Surgery, Ob/Gyn, Pediatrics
FLUSHING HOSPITAL MEDICAL CENTER	4500 Parsons Blvd, Flushing, NY 11355	www.flushinghospital.org	Medicine, Surgery, Pediatrics, Ob/Gyn
KINGS COUNTY HOSPITAL CENTER	451 Clarkson Ave, Brooklyn, NY 11203	www.nyc.gov/html/hhc/kchc/ html/home/home.shtml	Medicine, Ob/Gyn, Pediatrics, Psychiatry, Surgery
KINGSBROOK JEWISH MEDICAL CENTER	585 Schenectady Ave, Brooklyn, NY 11203	www.kingsbrook.org	Psychiatry, Family Medicine, Internal Medicine, Surgery
LINCOLN MEDICAL & MENTAL HEALTH CENTER	234 E. 149 th Street, Bronx, NY 10451	www.nychealthandhospitals.org/ lincoln/	Pediatrics, Surgery Medicine, Ob/Gyn, Psychiatry, ER
MAIMONIDES MEDICAL CENTER	4802 Tenth Avenue, Brooklyn, NY 11219	www.maimonidesmed.org	Selected Electives Only
MANHATTAN PSYCHIATRIC CENTER	Dunlap 10B 600 E. 125 th Street, Ward's Island Complex, NY 10035	www.omh.ny.gov	Psychiatry Cores Only
METROPOLITAN HOSPITAL CENTER	1901 First Avenue, New York, NY 10029	www.nychealthandhostals.org/ metropolitan	Psychiatry
MONTEFIORE NEW ROCHELLE	16 Guion Place, New Rochelle, NY 10802	www.ssmc.org	Medicine, Surgery, Family Medicine
NYC HEALTH + HOSPITALS ELMHURST AND QUEENS	79-01 Broadway, Room H3-135, Elmhurst, NY 11373	www.nychealthandhospitals.org/ elmhurst	Medicine, Surgery, Pediatrics, Ob/Gyn, Psychiatry
RICHMOND UNIVERSITY MEDICAL CENTER	355 Bard Ave, Staten Island, NY 10310	www.rumcsi.org	Medicine, Surgery, Pediatrics, Ob/Gyn, Psychiatry
ST. JOSEPH'S HOSPITAL HEALTH CENTER	301 Prospect Street, Syracuse, NY 13203	www.sjhsyr.org/location/ st-josephs-health-hospital	Emergency Medicine, Family Medicine, Psychiatry
THE BROOKLYN HOSPITAL CENTER	121 DeKalb Avenue, Brooklyn, NY 11201	www.tbh.org	Medicine, Ob/Gyn Surgery, Pediatrics, Family Medicine
WOODHULL MEDICAL AND MENTAL HEALTH CENTER	760 Broadway, Brooklyn, NY 11206	www.nyc.gov/html/hhc/ html/home/home.shtml	Medicine, Surgery, Ob/Gyn, Pediatrics, PM, R
WYCKOFF HEIGHTS MEDIAL CENTER	374 Stockholm Street, Brooklyn, NY 11237	www.wyckoffhospital.org	Medicine, Surgery Pediatrics, Ob/Gyn, Emergency Medicine



UK Affiliated Hospitals

BUCKINGHAMSHIRE

HOSPITAL	ADDRESS	WEBSITE	CORE ROTATION
STOKE MANDEVILLE HOSPITAL	Mandeville Road, Aylesbury, Buckinghamshire HP21 8AL	www.buckshealthcare.nhs.uk	Medicine and Surgery Cores, Electives

DORSET

HOSPITAL	ADDRESS	WEBSITE	CORE ROTATION
POOLE HOSPITAL NHS FOUNDATION TRUST	Longfleet Road, Poole, Dorset BH15 2JB	www.poolehos.org	Ob/Gyn, Medicine, Surgery, Pediatrics, General Practice
ST. ANN'S HOSPITAL, POOLE	69 Haven Road, Canford Cliffs, Poole BH13 7LN	www.dorsethealthcare.nhs.uk	Psychiatry
THE ADAM PRACTICE	306 Blandford Road, Poole, Dorset BH15 4JQ	www.adampractice.co.uk	General Practice

HAMPSHIRE

HOSPITAL	ADDRESS	WEBSITE	CORE ROTATION
NORTH HAMPSHIRE HOSPITAL	Aldermaston Road, Basingstoke, Hampshire RG24 9NA	www.northhampshire.nhs.uk	Medicine, Surgery, Pediatrics, Ob/Gyn, Psychiatry, General Practice
ROYAL HAMPSHIRE COUNTY HOSPITAL	Romsey Road, Winchester, Hampshire SO22 5DG	www.hampshirehospitals.nhs.uk	Medicine, Surgery, Pediatrics, Ob/Gyn, Psychiatry, General Practice



HERTFORDSHIRE

HOSPITAL	ADDRESS	WEBSITE	CORE ROTATION
SHEEPCOT MEDICAL CENTRE	6 Cunningham Way, Watford, Hertfordshire WD25 7NL	www.sheepcotmedicalcentre.co.uk	General Practice
WATFORD GENERAL HOSPITAL	Vicarage Road, WWD18 OHBatford, Hertfordshire WD18 OHB	www.westhertshospitals.nhs.uk	Medicine, Surgery, Pediatrics, Ob/Gyn, Psychiatry, General Practice

KENT

HOSPITAL	ADDRESS	WEBSITE	CORE ROTATION
QUEEN ELIZABETH THE QUEEN MOTHER HOSPITAL	St Peter's Road, Margate, Kent CT9 4AN	www.ekhuft.nhs.uk/patients-and-visitors/queen-elizabeth-the-queen-mother-hospital	Medicine, Surgery, Pediatrics, Ob/Gyn
ST. MARTIN'S HOSPITAL (KENT AND MEDWAY NHS)	Kent & Medway NHS & Social Care Partnership Trust, Littlebourne Road, Canterbury, Kent CT1 1TD	www.kmpt.nhs.uk	Psychiatry
WILLIAM HARVEY HOSPITAL	Kennington Road, Willesborough, Ashford, Kent TN24 0LZ	www.ekhuft.nhs.uk	Medicine, Ob/Gyn, Pediatrics, Surgery, General Practice

LONDON

HOSPITAL	ADDRESS	WEBSITE	CORE ROTATION
NORTH MIDDLESEX UNIVERSITY HOSPITAL	Sterling Way, Edmonton, London N18 1QX	www.northmid.nhs.uk	Medicine, Surgery, Pediatrics, Ob/Gyn
ST. ANN'S HOSPITAL, LONDON	St Ann's Road, London N15 3TH	www.beh-mht.nhs.uk	Psychiatry

NORFOLK

HOSPITAL	ADDRESS	WEBSITE	CORE ROTATION
NORFOLK & NORWICH UNIVERSITY HOSPITAL	Colney Lane, Norwich, Norfolk NR4 7UY	www.nnuh.nhs.uk	Medicine, Surgery, Pediatrics, Ob/Gyn, General Practice
NORFOLK & SUFFOLK NHS FOUNDATION TRUST, HELLESDON HOSPITAL	Drayton High Road, Norwich, NR6 5BE	www.nnuh.nhs.uk	Psychiatry

WEST MIDLANDS

HOSPITAL	ADDRESS	WEBSITE	CORE ROTATION
RUSSELLS HALL HOSPITAL	Dudley, West Midlands DY1 2HQ	www.dgh.nhs.uk	Medicine, Surgery, Pediatrics, Ob/Gyn, Psychiatry, General Practice



St. George's University
SCHOOL OF MEDICINE

Grenada, West Indies

Founded in 1976 with the goal of drawing the best talent and practices from around the world, St. George's University has become a leading center for academic excellence worldwide. With students and faculty drawn from more than 150 countries, we truly are an international institution, with a uniquely global perspective, perfectly poised to help educate students in this rapidly changing world.

CONTACT US TO LEARN MORE

admissions@sgu.edu

www.sgu.edu/md



VISIT OUR WEBSITE

